

For Research Use Only

# Anti-Human IL-1 beta (2A7C6), PBS Only (Detector)

Catalog Number: 65276-1-PBS



## Basic Information

Catalog Number:	65276-1-PBS	GenBank Accession Number:	BC008678	Purification Method:	Affinity purification
Concentration:	100ug, 1000 ug/ml	GeneID (NCBI):	3553	CloneNo.:	2A7C6
Source:	Mouse	ENSEMBL Gene ID:	ENSG00000125538		
Isotype:	IgG1	Full Name:	interleukin 1, beta		
Immunogen Catalog Number:	HZ-1164	Calculated MW:	269 aa, 31 kDa		

## Applications

**Tested Applications:**  
FC (Intra), Cytometric bead array, Indirect ELISA

**Species Specificity:**  
human

## Background Information

Interleukin-1 is a pro-inflammatory cytokine with multiple biological effects. The IL-1 gene family encodes three proteins: IL-1  $\alpha$ , IL-1  $\beta$  and their naturally occurring inhibitor IL-1RN. Interleukin 1  $\beta$  (IL-1  $\beta$ ), mainly produced by blood monocytes and tissue macrophages, has been implicated in mediating both acute and chronic inflammation. IL-1  $\beta$  is known to be involved in a variety of cellular activities, including cell proliferation, differentiation and apoptosis. IL-1  $\beta$  is emerging as a key mediator of carcinogenesis that characterizes host-environment interactions. (PMID: 8630372; 12401481; 23704929; 24618930)

## Storage

**Storage:**  
Store at -80°C.  
**The product is shipped with ice packs. Upon receipt, store it immediately at -80°C**

**Storage Buffer:**  
PBS Only

For technical support and original validation data for this product please contact:

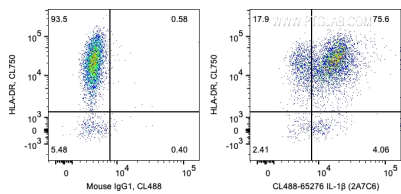
T: 4006900926

E: [Proteintech-CN@ptglab.com](mailto:Proteintech-CN@ptglab.com)

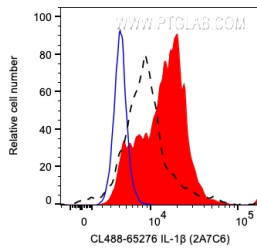
W: [ptgcn.com](http://ptgcn.com)

**This product is exclusively available under Proteintech Group brand and is not available to purchase from any other manufacturer.**

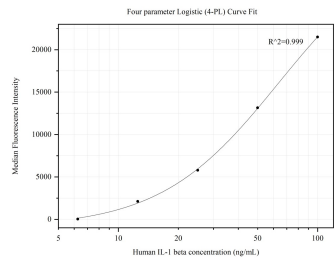
Selected Validation Data



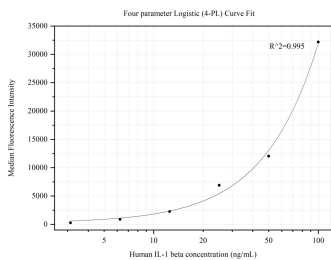
1X10<sup>6</sup> LPS and Brefeldin A treated human PBMCs were surface stained with Anti-Human HLA-DR then intracellularly stained with 0.2 ug CoraLite® Plus 488 Anti-Human IL-1 β (CL488-65276, Clone:2A7C6) or Mouse IgG1 Isotype Control. Cells were fixed and permeabilized with Transcription Factor Staining Buffer Kit (PF00011). Monocytes were gated. This data was developed using the CoraLite® Plus 488 conjugated antibody of 65276-1-Ig. This data was developed using



1X10<sup>6</sup> LPS and Brefeldin A treated human PBMCs were intracellularly stained with 0.2 ug CoraLite® Plus 488 Anti-Human IL-1 β (CL488-65276, Clone:2A7C6) (red) or Mouse IgG1 Isotype Control (blue), or unactivated and Brefeldin A treated human PBMCs were intracellularly stained with 0.2 ug CoraLite® Plus 488 Anti-Human IL-1 β (CL488-65276, Clone:2A7C6) (black, dashed line). Cells were fixed and permeabilized with Transcription Factor Staining Buffer Kit (PF00011).



Cytometric bead array standard curve of MP80001-1, IL-1 beta Hybrid Matched Antibody Pair, PBS Only. Capture antibody: 82696-6-PBS. Detection antibody: 65276-1-PBS. Standard:HZ-1164. Range: 6.25-100 ng/mL



Cytometric bead array standard curve of MP80001-5, IL-1 beta Hybrid Matched Antibody Pair, PBS Only. Capture antibody: 82696-3-RR. Detection antibody: 65276-1-PBS. Standard:HZ-1164. Range: 3.125-100 ng/mL