

For Research Use Only

# Anti-Human CD26 (BA5b)

Catalog Number: 65267-1-Ig



## Basic Information

<b>Catalog Number:</b> 65267-1-Ig	<b>GenBank Accession Number:</b> BC013329	<b>Purification Method:</b> Affinity purification
<b>Size:</b> 100ug, 0.5 mg/mL	<b>GeneID (NCBI):</b> 1803	<b>CloneNo.:</b> BA5b
<b>Source:</b> Mouse	<b>Full Name:</b> dipeptidyl-peptidase 4	
<b>Isotype:</b> IgG2a, kappa	<b>Calculated MW:</b> 88 kDa	

## Applications

**Tested Applications:**  
FC

**Species Specificity:**  
Human

## Background Information

CD26, also known as DPP4 (dipeptidyl peptidase-4), is a 110 kDa type II cell-surface glycoprotein widely expressed on T cells, activated B cells, activated NK cells and myeloid cells as well as on epithelial cells, fibroblasts, mesothelium, and endothelial cells of a variety of tissues (PMID:33777580; 26919392). It has ecto-enzyme activity in its extracellular domain and cleaves amino-terminal dipeptides with either L-proline or L-alanine at the penultimate position (PMID: 9553764). CD26 plays roles in diverse biological processes such as immunoregulation, glucose homeostasis, and tumorigenesis (PMID: 33777580).

## Storage

**Storage:**  
Store at 2-8°C. Stable for one year after shipment.

**Storage Buffer:**  
PBS with 0.09% sodium azide.

For technical support and original validation data for this product please contact:

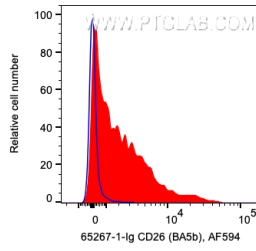
T: 4006900926

E: [Proteintech-CN@ptglab.com](mailto:Proteintech-CN@ptglab.com)

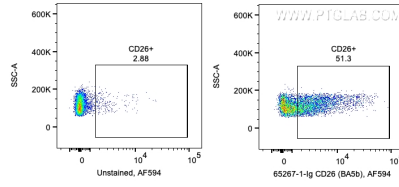
W: [ptgcn.com](http://ptgcn.com)

**This product is exclusively available under Proteintech Group brand and is not available to purchase from any other manufacturer.**

## Selected Validation Data



1X10<sup>6</sup> human PBMCs were surface stained with 0.2 ug Anti-Human CD26 (65267-1-Ig, Clone:BA5b) and CoraLite®594-Conjugated AffiniPure Goat Anti-Mouse IgG(H+L) at dilution 1:1000. Cells were not fixed. Lymphocytes were gated.



1X10<sup>6</sup> human PBMCs were surface stained with 0.2 ug Anti-Human CD26 (65267-1-Ig, Clone:BA5b) and CoraLite®594-Conjugated AffiniPure Goat Anti-Mouse IgG(H+L) at dilution 1:1000. Cells were not fixed. Lymphocytes were gated.