

For Research Use Only

Anti-Human IL3RA/CD123 (HI12H7)

Catalog Number: 65256-1-Ig



Basic Information

Catalog Number: 65256-1-Ig	GenBank Accession Number: BC035407	Purification Method: Affinity purification
Concentration: 100ug, 0.5 mg/ml	GeneID (NCBI): 3563	CloneNo.: HI12H7
Source: Mouse	ENSEMBL Gene ID: ENSG00000185291	
Isotype: IgG1, kappa	Full Name: interleukin 3 receptor, alpha (low affinity)	
	Calculated MW: 378 aa, 43 kDa	

Applications

Tested Applications:
FC

Species Specificity:
human

Background Information

CD123, also referred to as interleukin-3 receptor subunit alpha (IL-3R α), belongs to the cytokine receptor family. It is a glycoprotein containing an extracellular domain, involving a predicted Ig-like domain, two FnIII domains, a transmembrane domain and an intracellular domain (PMID: 24513123). CD123 is expressed on hematopoietic progenitor cells, plasmacytoid dendritic cells, basophils, monocytes, some B cells, and in a variety of hematologic malignancies (PMID: 10527461; 34855461). IL-3 initially binds to CD123 and subsequently recruits the beta chain (CD131) to form the high-affinity receptor, resulting in the activation of a series of signaling pathways including the JAK/STAT, Ras-MAPK, and phosphatidylinositol 3-kinase pathways (PMID: 29296749). IL-3R signaling regulates the proliferation, survival, and differentiation of hematopoietic cells.

Storage

Storage:
Store at 2-8°C. Stable for one year after shipment.

Storage Buffer:
PBS with 0.09% sodium azide.

For technical support and original validation data for this product please contact:

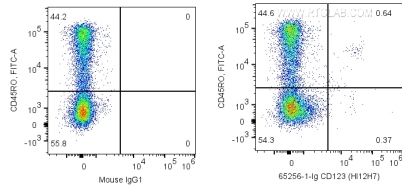
T: 4006900926

E: Proteintech-CN@ptglab.com

W: ptgcn.com

This product is exclusively available under Proteintech Group brand and is not available to purchase from any other manufacturer.

Selected Validation Data



1X10⁶ human PBMCs were surface co-stained with FITC Anti-Human CD45RO and 0.2 ug Anti-Human CD123 (65256-1-Ig, Clone:H12H7) labeled with FlexAble CoraLite® Plus 647 Antibody Labeling Kit for Mouse IgG1 or Mouse IgG1 Isotype Control. Cells were not fixed. Lymphocytes were gated.