

For Research Use Only

Anti-Human CD35 (E11)

Catalog Number: 65254-1-Ig



Basic Information

Catalog Number: 65254-1-Ig	GenBank Accession Number: NM_000573	Purification Method: Affinity purification
Size: 100ug, 0.5 mg/mL	GeneID (NCBI): 1378	CloneNo.: E11
Source: Mouse	ENSEMBL Gene ID: ENSG00000203710	
Isotype: IgG1, kappa	UNIPROT ID: P17927	
	Full Name: complement component (3b/4b) receptor 1 (Knops blood group)	
	Calculated MW: 224 kDa	

Applications

Tested Applications:
FC, ELISA

Species Specificity:
Human

Background Information

CD35, also known as complement receptor type 1 (CR1) or C3b/C4b receptor, is a single-chain glycoprotein consisting of 30 repeating homologous protein domains known as short consensus repeats (~60 amino acids each) followed by transmembrane and cytoplasmic domains (PMID: 8765013). CD35 is variably expressed by granulocytes, monocytes, B cells, some T cells, erythrocytes, follicular dendritic cells, Langerhans cells, and glomerular podocytes (PMID: 19004497). CD35 acts as a receptor for C3b and C4b and plays important roles in the regulation of the complement cascade and clearance of immune complexes.

Storage

Storage:
Store at 2-8°C. Stable for one year after shipment.

Storage Buffer:
PBS with 0.09% sodium azide.

For technical support and original validation data for this product please contact:

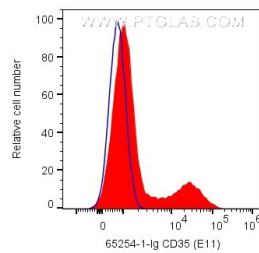
T: 4006900926

E: Proteintech-CN@ptglab.com

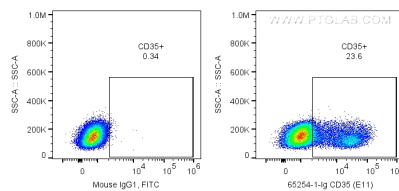
W: ptgcn.com

This product is exclusively available under Proteintech Group brand and is not available to purchase from any other manufacturer.

Selected Validation Data



1X10⁶ human PBMCs were surface stained with 0.2 ug Anti-Human CD35 (65254-1-Ig, Clone:E11) and CoraLite®488-Conjugated AffiniPure Goat Anti-Mouse IgG(H+L) at dilution 1:1000 (red), or CoraLite®488-Conjugated Mouse IgG1 Isotype Control. Cells were not fixed. Lymphocytes were gated.



1X10⁶ human PBMCs were surface stained with 0.2 ug Anti-Human CD35 (65254-1-Ig, Clone:E11) and CoraLite®488-Conjugated AffiniPure Goat Anti-Mouse IgG(H+L) at dilution 1:1000, or CoraLite®488-Conjugated Mouse IgG1 Isotype Control. Cells were not fixed. Lymphocytes were gated.