

For Research Use Only

# Anti-Human ALCAM (3A6)

Catalog Number: 65223-1-Ig



## Basic Information

<b>Catalog Number:</b> 65223-1-Ig	<b>GenBank Accession Number:</b> BC057809	<b>Purification Method:</b> Affinity purification
<b>Size:</b> 100ug, 0.5 mg/mL	<b>GeneID (NCBI):</b> 214	<b>CloneNo.:</b> 3A6
<b>Source:</b> Mouse	<b>UNIPROT ID:</b> Q13740	
<b>Isotype:</b> IgG1, kappa	<b>Full Name:</b> activated leukocyte cell adhesion molecule	
	<b>Calculated MW:</b> 105 kDa	

## Applications

**Tested Applications:**  
FC

**Species Specificity:**  
Human

## Background Information

Activated leukocyte cell adhesion molecule (ALCAM, also known as CD166) is a cell adhesion molecule that belongs to the immunoglobulin superfamily. It is involved in cell-cell adhesion through homophilic and heterophilic (to CD6) interactions. ALCAM is widely expressed in a variety of normal tissues and cell types, including activated T cells and monocytes, epithelial cells, fibroblasts, neuronal cells, hepatocytes, and bone marrow mesenchymal stem cells (PMID: 7760007; 25221999). Altered ALCAM expression has been associated with the differentiation state and progression in some neoplasms including melanoma, prostate, colorectal, and breast cancers (PMID: 20461761; 18172759).

## Storage

**Storage:**  
Store at 2-8°C. Stable for one year after shipment.

**Storage Buffer:**  
PBS with 0.09% sodium azide.

For technical support and original validation data for this product please contact:

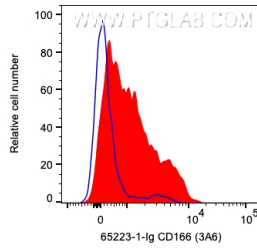
T: 4006900926

E: [Proteintech-CN@ptglab.com](mailto:Proteintech-CN@ptglab.com)

W: [ptgcn.com](http://ptgcn.com)

**This product is exclusively available under Proteintech Group brand and is not available to purchase from any other manufacturer.**

## Selected Validation Data



1X10<sup>6</sup> PHA treated human PBMCs were surface stained with 0.2 ug Anti-Human ALCAM (65223-1-Ig, Clone:3A6) and CL594-Goat anti-Mouse IgG at dilution 1:1000 (red) or unstained (blue). Cells were not fixed. Monocytes were gated.