

For Research Use Only

Anti-Mouse PLVAP (MECA-32)

Catalog Number: 65214-1-Ig



Basic Information

Catalog Number: 65214-1-Ig	GenBank Accession Number: BC013517	Purification Method: Protein A purification
Concentration: 100ug, 0.5 mg/ml	GeneID (NCBI): 84094	CloneNo.: MECA-32
Source: Rat	UNIPROT ID: Q91VC4	Recommended Dilutions: IF-P 1:125-1:500 IF-Fro 1:125-1:500
Isotype: IgG2a, kappa	Full Name: plasmalemma vesicle associated protein	

Applications

Tested Applications: IF-P, IF-Fro, FC	Positive Controls: IF-P : mouse small intestine tissue, IF-Fro : mouse small intestine tissue,
Species Specificity: mouse	

Background Information

Plasmalemma vesicle-associated protein (PLVAP), also known as PV-1, PAL-E and MECA-32 antigen, is an endothelial cell-specific type II membrane N-glycosylated glycoprotein with a molecular weight of approximately 50-65 kDa, that forms homodimers in situ (PMID: 7626790; 30231925). The MECA-32 antibody, derived from rats immunized with murine lymph node stroma, shows high specificity for mouse endothelium in both embryonic and mature tissues (PMID: 2683264; 7626790). It recognizes most endothelial cells in the embryonic and in the adult mouse, with the exception of the brain, skeletal, and cardiac muscle, where the MECA-32 antigen has a more restricted distribution. In skeletal and cardiac muscle only small arterioles and venules express the MECA-32 antigen, while in the brain its expression is negatively correlated with the differentiation of the vasculature to form the blood brain barrier (PMID: 7626790).

Storage

Storage:
Store at 2-8°C. Stable for one year after shipment.
Storage Buffer:
PBS with 0.09% sodium azide, pH7.3

For technical support and original validation data for this product please contact:

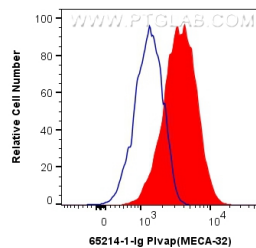
T: 4006900926

E: Proteintech-CN@ptglab.com

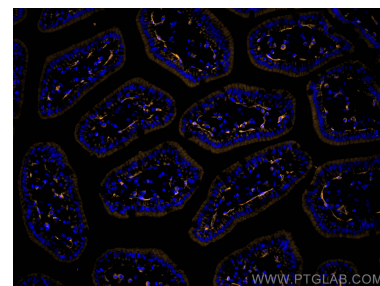
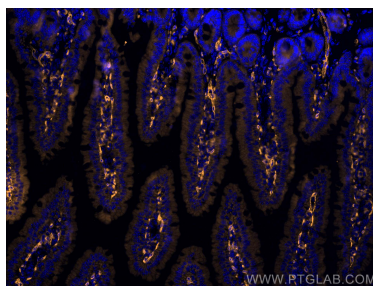
W: ptgcn.com

This product is exclusively available under Proteintech Group brand and is not available to purchase from any other manufacturer.

Selected Validation Data



1×10^6 bEnd.3 cells were surface stained with 0.5 ug Anti-Mouse Plvap (65214-1-Ig, Clone: MECA-32) (red), or 0.5 ug Isotype Control. Cells were not fixed.



Immunofluorescent analysis of (4% PFA) fixed frozen OCT-embedded mouse small intestine tissue using PLVAP antibody (65214-1-Ig, Clone: MECA-32) at dilution of 1:250 and Rhodamine (TRITC)-conjugated Goat Anti-Rat IgG(H+L).