

For Research Use Only

Rat IgG2b Isotype Control (LTF-2)

Catalog Number: 65211-1-Ig **1 Publications**



Basic Information

Catalog Number:

65211-1-Ig

Size:

500ug, 0.5 mg/mL

Source:

Rat

Isotype:

IgG2b

GenBank Accession Number:

GeneID (NCBI):

Full Name:

Purification Method:

Affinity purification

CloneNo.:

LTF-2

Applications

Tested Applications:

FC

Species Specificity:

Background Information

The LTF-2 immunoglobulin is useful as an isotype-matched control. The LTF-2 immunoglobulin has an unknown binding specificity and is used as an isotype control for rat IgG2b antibodies. This antibody has been quality-tested for flow cytometry as negative control.

Notable Publications

| Author | Pubmed ID | Journal | Application |
|-----------|-----------|------------|-------------|
| Xinzhi Li | 34893641 | Nat Commun | |

Storage

Storage:

Store at 2-8°C.

Storage Buffer:

Phosphate based buffer with 0.09% sodium azide, pH 7.2.

For technical support and original validation data for this product please contact:

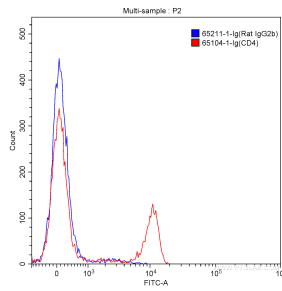
T: 4006900926

E: Proteintech-CN@ptglab.com

W: ptgcn.com

This product is exclusively available under Proteintech Group brand and is not available to purchase from any other manufacturer.

Selected Validation Data



1X10⁶ BALB/c mouse splenocytes were surface stained with 0.5 ug Rat IgG2b Isotype Control (65211-1-Ig, Clone: LTF-2) (blue) and Fluorescein (FITC)-conjugated Affinipure Goat Anti-Rat IgG(H+L) at dilution of 1:1000, or with 0.5 ug Anti-Mouse CD4 (65104-1-Ig, Clone: GK1.5) (red) and Fluorescein (FITC)-conjugated Affinipure Goat Anti-Rat IgG(H+L) at dilution of 1:1000. Cells were not fixed.