

For Research Use Only

# Anti-Mouse CD8a (5H10-1), PBS Only

Catalog Number: 65205-1-PBS



## Basic Information

<b>Catalog Number:</b> 65205-1-PBS	<b>GenBank Accession Number:</b> BC030679	<b>Purification Method:</b> Protein G purification
<b>Concentration:</b> 100ug, 1 mg/ml	<b>GeneID (NCBI):</b> 12525	<b>CloneNo.:</b> 5H10-1
<b>Source:</b> Rat	<b>UNIPROT ID:</b> P01731	
<b>Isotype:</b> IgG2b, lambda	<b>Full Name:</b> CD8 antigen, alpha chain	

## Applications

**Tested Applications:**  
IF-P, FC

**Species Specificity:**  
mouse

## Background Information

CD8 is a transmembrane glycoprotein composed of two disulfide-linked chains. It can be present as a homodimer of CD8 $\alpha$  or as a heterodimer of CD8 $\alpha$  and CD8 $\beta$  (PMID: 3264320; 8253791). CD8 is found on most thymocytes. The majority of class I-restricted T cells express mostly the CD8 $\alpha$  $\beta$  heterodimer while CD8 $\alpha$  $\alpha$  homodimers alone have been found on some gut intraepithelial T cells, on some T cell receptor (TCR)  $\gamma$  $\delta$  T cells and on NK cells (PMID: 2111591; 1831127; 8420975). CD8 acts as a co-receptor that binds to MHC class-I and participates in cytotoxic T cell activation (PMID: 8499079). During T cell development, CD8 is required for positive selection of CD4-/CD8+ T cells (PMID: 1968084).

## Storage

**Storage:**  
Store at -80°C.  
**The product is shipped with ice packs. Upon receipt, store it immediately at -80°C**

**Storage Buffer:**  
PBS Only, pH7.3

For technical support and original validation data for this product please contact:

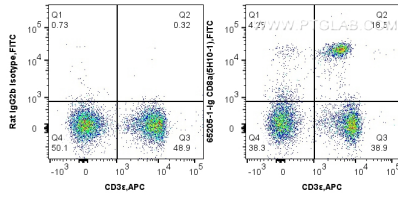
T: 4006900926

E: Proteintech-CN@ptglab.com

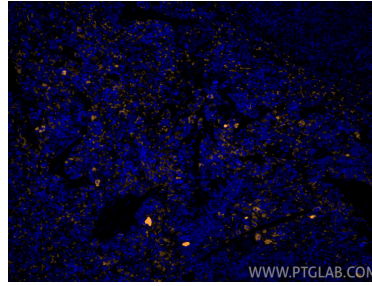
W: ptgcn.com

**This product is exclusively available under Proteintech Group brand and is not available to purchase from any other manufacturer.**

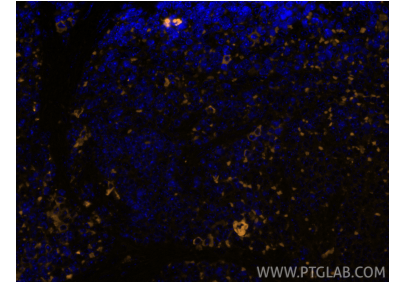
## Selected Validation Data



1X10<sup>6</sup> C57BL/c mouse splenocytes were surface co-stained with APC Anti-Mouse CD3  $\epsilon$  and 0.25  $\mu$ g Anti-Mouse CD8 $\alpha$  (65205-1-Ig, Clone:5H10-1) and FITC anti-rat IgG2b Antibody at dilution 1:100, or rat IgG2b Isotype Control and FITC anti-rat IgG2b Antibody at dilution 1:100. Cells were not fixed. This data was developed using the same antibody clone with 65205-1-PBS in a different storage buffer formulation.



Immunofluorescent analysis of (4% PFA) fixed paraffin-embedded mouse spleen tissue using CD8 $\alpha$  antibody (65205-1-Ig, Clone: 5H10-1) at dilution of 1:400 and Rhodamine (TRITC)-conjugated Goat Anti-Rat IgG(H+L). Heat mediated antigen retrieval with Tris-EDTA buffer (pH 9.0). This data was developed using the same antibody clone with 65205-1-PBS in a different storage buffer formulation.



Immunofluorescent analysis of (4% PFA) fixed paraffin-embedded mouse spleen tissue using CD8 $\alpha$  antibody (65205-1-Ig, Clone: 5H10-1) at dilution of 1:400 and Rhodamine (TRITC)-conjugated Goat Anti-Rat IgG(H+L). Heat mediated antigen retrieval with Tris-EDTA buffer (pH 9.0). This data was developed using the same antibody clone with 65205-1-PBS in a different storage buffer formulation.