

For Research Use Only

# Anti-Human CD29 (TS2/16)

Catalog Number: 65191-1-Ig 2 Publications



## Basic Information

### Catalog Number:

65191-1-Ig

### Size:

100ug, 500 ug/ml

### Source:

Mouse

### Isotype:

IgG1, kappa

### GenBank Accession Number:

BC020057

### GeneID (NCBI):

3688

### ENSEMBL Gene ID:

ENSG00000150093

### UNIPROT ID:

P05556

### Full Name:

integrin, beta 1 (fibronectin receptor, beta polypeptide, antigen CD29 includes MDF2, MSK12)

### Calculated MW:

88 kDa

### Purification Method:

Protein A purification

### CloneNo.:

TS2/16

## Applications

### Tested Applications:

FC

### Cited Applications:

IF, FC

### Species Specificity:

human

### Cited Species:

human

## Background Information

Integrin beta-1 (ITGB1), also named as CD29, is a 130 kDa single chain type I glycoprotein that is expressed in a heterodimeric complex with one of six distinct  $\alpha$  subunits, comprising the very late activation antigen (VLA) subfamily of adhesion receptors. It is one of the essential surface molecules expressed on human MSC from bone marrow and other sources. The  $\beta$  1 subunit is also broadly expressed on lymphocytes and monocytes, weakly expressed on granulocytes, and not expressed on erythrocytes. These receptors are involved in a variety of cell-cell and cell-matrix interactions.

## Notable Publications

| Author     | Pubmed ID | Journal      | Application |
|------------|-----------|--------------|-------------|
| Junjie Liu | 34707701  | Exp Ther Med | FC          |
| Baihe Han  | 35968497  | Dis Markers  | FC          |

## Storage

### Storage:

Store at 2-8°C. Stable for one year after shipment.

### Storage Buffer:

PBS with 0.09% sodium azide.

For technical support and original validation data for this product please contact:

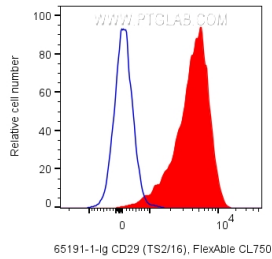
T: 4006900926

E: Proteintech-CN@ptglab.com

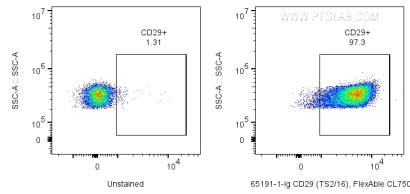
W: ptgcn.com

This product is exclusively available under Proteintech Group brand and is not available to purchase from any other manufacturer.

## Selected Validation Data



1X10<sup>6</sup> human PBMCs were surface stained with 0.2 ug Anti-Human CD29 (65191-1-Ig, Clone:TS2/16) labeled with FlexAble CoraLite® Plus 750 Antibody Labeling Kit for Mouse IgG1 (KFA024) (red), or unstained (blue). Cells were not fixed. Monocytes were gated.



1X10<sup>6</sup> human PBMCs were surface stained with 0.2 ug Anti-Human CD29 (65191-1-Ig, Clone:TS2/16) labeled with FlexAble CoraLite® Plus 750 Antibody Labeling Kit for Mouse IgG1 (KFA024) (right), or unstained (left). Cells were not fixed. Monocytes were gated.