

Anti-Human CD163 (GHI/61)

Catalog Number: 65169-1-Ig

Basic Information

Catalog Number:

65169-1-Ig

Size:

100ug, 1 mg/ml

Source:

Mouse

Isotype:

IgG1, kappa

GenBank Accession Number:

BC051281

GeneID (NCBI):

9332

ENSEMBL Gene ID:

ENSG00000177575

UNIPROT ID:

Q86VB7

Full Name:

CD163 molecule

Calculated MW:

1156 aa, 125 kDa

Purification Method:

Protein A purification

CloneNo.:

GHI/61

Applications

Tested Applications:

FC

Species Specificity:

Human

Background Information

CD163, also known as M130, is a membrane glycoprotein which belongs to the scavenger receptor superfamily (PMID: 8370408). It is an acute phase-regulated and signal-inducing macrophage protein expressed exclusively in monocytes and tissue macrophages (PMID: 11196644). CD163 mediates endocytosis of haptoglobin-haemoglobin complexes (PMID: 11196644). The uptake of haptoglobin by macrophages contributes to the recycling of iron and also to the inflammatory response (PMID: 22900885). Soluble CD163 (sCD163), as a result of ectodomain shedding during inflammatory activation of macrophages, circulates in blood and has been suggested as a plasma/serum marker for macrophage activity (PMID: 12570164).

Storage

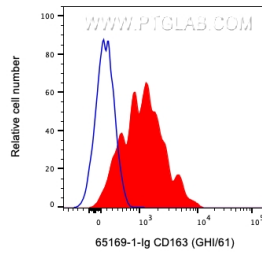
Storage:

Store at 2-8°C. Stable for one year after shipment.

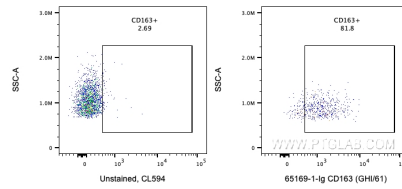
Storage Buffer:

PBS with 0.09% sodium azide.

Selected Validation Data



1X10⁶ human PBMCs were surface stained with 0.5 ug Anti-Human CD163 (65169-1-Ig, Clone:GHI/61) and CoraLite®594-Conjugated AffiniPure Goat Anti-Mouse IgG(H+L) at dilution 1:1000 (red) or unstained. Cells were not fixed. Granulocytes were gated.



1X10⁶ human PBMCs were surface stained with 0.5 ug Anti-Human CD163 (65169-1-Ig, Clone:GHI/61) and CoraLite®594-Conjugated AffiniPure Goat Anti-Mouse IgG(H+L) at dilution 1:1000 or unstained. Cells were not fixed. Granulocytes were gated.