

# Anti-Human CD8a (OKT8)

Catalog Number: 65135-1-Ig

## Basic Information

**Catalog Number:**

65135-1-Ig

**Size:**

100ug, 0.5 mg/ml

**Source:**

Mouse

**Isotype:**

IgG2a, kappa

**GenBank Accession Number:**

BC025715

**GeneID (NCBI):**

925

**ENSEMBL Gene ID:**

ENSG00000153563

**Full Name:**

CD8a molecule

**Calculated MW:**

235 aa, 26 kDa

**Purification Method:**

Affinity purification

**CloneNo.:**

OKT8

## Applications

**Tested Applications:**

FC

**Species Specificity:**

Human

## Background Information

CD8 is a transmembrane glycoprotein composed of two disulfide-linked chains. It can be present as a homodimer of CD8 $\alpha$  or as a heterodimer of CD8 $\alpha$  and CD8 $\beta$  (PMID: 3264320; 8253791). CD8 is found on most thymocytes. The majority of class I-restricted T cells express mostly the CD8 $\alpha$   $\beta$  heterodimer while CD8 $\alpha$   $\alpha$  homodimers alone have been found on some gut intraepithelial T cells, on some T cell receptor (TCR)  $\gamma$   $\delta$  T cells and on NK cells (PMID: 2111591; 1831127; 8420975). CD8 acts as a co-receptor that binds to MHC class-I and participates in cytotoxic T cell activation (PMID: 8499079). During T cell development, CD8 is required for positive selection of CD4-/CD8+ T cells (PMID: 1968084).

## Storage

**Storage:**

Store at 2-8°C. Stable for one year after shipment.

**Storage Buffer:**

PBS with 0.09% sodium azide.

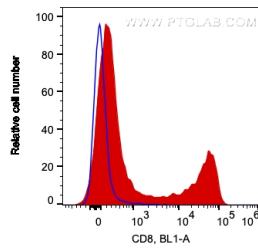
For technical support and original validation data for this product please contact:

T: 4006900926

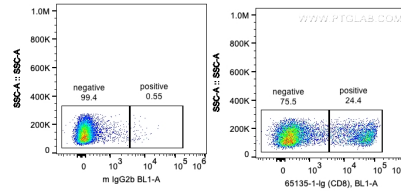
E: [Proteintech-CN@ptglab.com](mailto:Proteintech-CN@ptglab.com)W: [ptgcn.com](http://ptgcn.com)

This product is exclusively available under Proteintech Group brand and is not available to purchase from any other manufacturer.

## Selected Validation Data



1X10<sup>6</sup> human PBMCs were surface stained with 0.2 ug Anti-Human CD8a (65135-1-Ig, Clone:OKT8) and CoraLite®488-Conjugated AffiniPure Goat Anti-Mouse IgG(H+L) at dilution 1:1000 (red), and 0.2 ug Mouse IgG2a Isotype Control (CL488-66360-2, Clone: K11A1B2A2) (blue). Cells were not fixed. Lymphocytes are gated.



1X10<sup>6</sup> human PBMCs were surface stained with 0.2 ug Anti-Human CD8a (65135-1-Ig, Clone:OKT8) and CoraLite®488-Conjugated AffiniPure Goat Anti-Mouse IgG(H+L) at dilution 1:1000 (red), and 0.2 ug Mouse IgG2a Isotype Control (CL488-66360-2, Clone: K11A1B2A2) (blue). Cells were not fixed. Lymphocytes are gated.