

For Research Use Only

# Mouse IgG1 Isotype Control (MOPC-21)



Catalog Number: 65124-1-Ig

## Basic Information

<b>Catalog Number:</b> 65124-1-Ig	<b>GenBank Accession Number:</b> GeneID (NCBI): 16017	<b>Purification Method:</b> Affinity purification
<b>Size:</b> 500ug, 0.5 mg/mL	<b>UNIPROT ID:</b> P01868	<b>CloneNo.:</b> MOPC-21
<b>Source:</b> Mouse	<b>Full Name:</b> immunoglobulin heavy constant gamma 1 (G1m marker)	
<b>Isotype:</b> IgG1		

## Applications

**Tested Applications:**  
FC

**Species Specificity:**

## Background Information

The MOPC-21 immunoglobulin is useful as an isotype-matched control. The MOPC-21 immunoglobulin has an unknown binding specificity and is used as an isotype control for mouse IgG1 antibodies. This antibody has been quality-tested for flow cytometry as negative control.

## Storage

**Storage:**  
Store at 2-8°C. Stable for one year after shipment.

**Storage Buffer:**  
PBS with 0.09% sodium azide.

For technical support and original validation data for this product please contact:

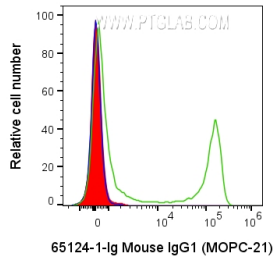
T: 4006900926

E: [Proteintech-CN@ptglab.com](mailto:Proteintech-CN@ptglab.com)

W: [ptgcn.com](http://ptgcn.com)

**This product is exclusively available under Proteintech Group brand and is not available to purchase from any other manufacturer.**

## Selected Validation Data



$1 \times 10^6$  human PBMCs were surface stained with 0.2  $\mu$ g Anti-Mouse IgG1 Isotype Control (65124-1-Ig, Clone:MOPC-21) (red) or 0.2  $\mu$ g Anti-Human CD8a (65113-1-Ig, Clone:Hit8a) (green) and CoraLite@647-conjugated AffiniPure F(ab')<sub>2</sub> Fragment Goat Anti-Mouse IgG (H+L) (SA00014-8) at dilution 1:1000 or unstained (blue). Cells were not fixed. Lymphocytes were gated.