

For Research Use Only

# Anti-Mouse CD4 (GK1.5)

Catalog Number: 65104-1-Ig **2 Publications**



## Basic Information

<b>Catalog Number:</b> 65104-1-Ig	<b>GenBank Accession Number:</b> BC039137	<b>Purification Method:</b> Affinity purification
<b>Concentration:</b> 500ug, 0.5 mg/ml	<b>GeneID (NCBI):</b> 12504	<b>CloneNo.:</b> GK1.5
<b>Source:</b> Rat	<b>UNIPROT ID:</b> P06332	
<b>Isotype:</b> IgG2b, kappa	<b>Full Name:</b> CD4 antigen	

## Applications

**Tested Applications:**  
FC

**Cited Applications:**  
IF, FC

**Species Specificity:**  
mouse

**Cited Species:**  
mouse

## Background Information

CD4 is a 55-kDa transmembrane glycoprotein expressed on T helper cells, majority of thymocytes, monocytes, macrophages, and dendritic cells (PMID: 9304802; 12213222). CD4 is an accessory protein for MHC class-II antigen/T-cell receptor interaction. It plays an important role in T helper cell development and activation (PMID: 9539765; 3112582). CD4 serves as a receptor for the human immunodeficiency virus (HIV) (PMID: 9304802).

## Notable Publications

Author	Pubmed ID	Journal	Application
Haoran Wang	35087966	Bioact Mater	FC
Tao Bi	38223805	J Tradit Complement Med	IF

## Storage

**Storage:**  
Store at 2-8°C. Stable for one year after shipment.

**Storage Buffer:**  
PBS with 0.09% sodium azide.

For technical support and original validation data for this product please contact:

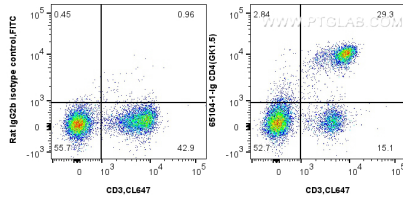
T: 4006900926

E: [Proteintech-CN@ptglab.com](mailto:Proteintech-CN@ptglab.com)

W: [ptgcn.com](http://ptgcn.com)

**This product is exclusively available under Proteintech Group brand and is not available to purchase from any other manufacturer.**

## Selected Validation Data



1x10<sup>6</sup> C57BL/6 mouse splenocytes were surface stained with 0.5 ug Anti-Mouse CD4 (GK1.5) (65104-1-Ig, Clone:GK1.5) or 0.5 ug Rat IgG2b Isotype Control (LTF-2) (65211-1-Ig, Clone: LTF-2) and FITC anti-rat IgG2b Antibody, and 0.5 ug CoraLite® Plus 647 Anti-Mouse CD3 (17A2) (CL647-65077, Clone: 17A2). Cells were not fixed.