

For Research Use Only

Anti-Human CD40 (G28.5), PBS Only

Catalog Number: 65103-1-PBS



Basic Information

Catalog Number: 65103-1-PBS	GenBank Accession Number: BC012419	Purification Method: Affinity purification
Size: 100ug, 2mg/ml	GeneID (NCBI): 958	CloneNo.: G28.5
Source: Mouse	ENSEMBL Gene ID: ENSG00000101017	
Isotype: IgG1, kappa	Full Name: CD40 molecule, TNF receptor superfamily member 5	
	Calculated MW: 277 aa, 31 kDa	

Applications

Tested Applications:
FC, Sandwich ELISA, Indirect ELISA

Species Specificity:
human

Background Information

CD40, also named as TNFRSF5 and Bp50, is a type I transmembrane protein that belongs to the tumor necrosis factor-R (TNF-R) family (PMID: 10647992). CD40 is expressed on B cells, dendritic cells (DCs), monocytes, platelets, and macrophages as well as by non-hematopoietic cells such as myofibroblasts, fibroblasts, epithelial, and endothelial cells (PMID: 19426221). It is a receptor for TNFSF5/CD40LG. CD40L/CD40 interactions are essential for immunoglobulin (Ig) isotype switching, germinal center formation and the development of B cell memory (PMID: 7516405; 11675497).

Storage

Storage:
Store at -80°C.
The product is shipped with ice packs. Upon receipt, store it immediately at -80°C

Storage Buffer:
PBS Only

For technical support and original validation data for this product please contact:

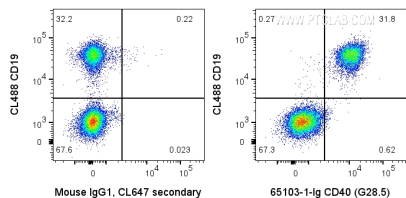
T: 4006900926

E: Proteintech-CN@ptglab.com

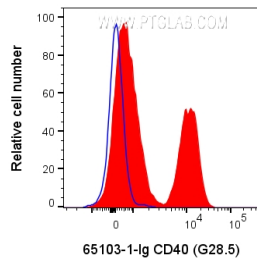
W: ptgcn.com

This product is exclusively available under Proteintech Group brand and is not available to purchase from any other manufacturer.

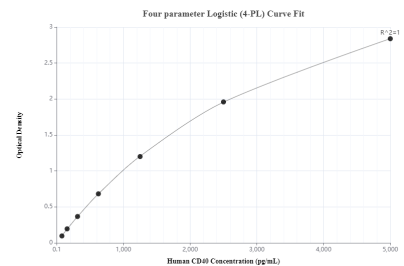
Selected Validation Data



1X10⁶ human PBMCs were surface stained with 0.2 ug Anti-Human CD40 (65103-1-Ig, Clone:G28.5) or Mouse IgG1 Isotype Control and CoraLite®647-Conjugated AffiniPure Goat Anti-Mouse IgG(H+L) at dilution 1:1000. Cells were then stained with CoraLite®488 Anti-Human CD19. Cells were not fixed. Lymphocytes were gated. This data was developed using the same antibody clone with 65103-1-PBS in a different storage buffer formulation.



1X10⁶ human PBMCs were surface stained with 0.2 ug Anti-Human CD40 (65103-1-Ig, Clone:G28.5) or Mouse IgG1 Isotype Control and CoraLite®647-Conjugated AffiniPure Goat Anti-Mouse IgG(H+L) at dilution 1:1000. Cells were not fixed. Lymphocytes were gated. This data was developed using the same antibody clone with 65103-1-PBS in a different storage buffer formulation.



Sandwich ELISA standard curve of MP50064-1, CD40 Monoclonal Matched Antibody Pair, PBS Only. Capture antibody: 66965-2-PBS. Detection antibody: 65103-1-PBS. Standard: Ag28040. Range: 78.1-5000 pg/mL.