

For Research Use Only

# Anti-Human CD25/IL-2RA (BC96)

Catalog Number: 65096-1-Ig **2 Publications**



## Basic Information

Catalog Number: 65096-1-Ig	GenBank Accession Number: BC156627	Purification Method: Affinity purification
Size: 100ug, 0.5 mg/ml	GeneID (NCBI): 3559	CloneNo.: BC96
Source: Mouse	UNIPROT ID: P01589	
Isotype: IgG1, kappa	Full Name: interleukin 2 receptor, alpha	
	Calculated MW: 272 aa, 31 kDa	

## Applications

Tested Applications:  
FC

Cited Applications:  
FC

Species Specificity:  
human

Cited Species:  
human

## Background Information

Proliferation of T lymphocytes is triggered by the interaction of IL-2 with its specific receptor following T lymphocyte activation. The receptor for IL-2 has three forms, generated by different combinations of three different proteins, the alpha chain (IL-2R alpha), the beta chain (IL-2R beta), and the gamma chain (IL-2R gamma) (PMID: 8476561). IL-2R alpha (also known as CD25) is a type I transmembrane protein present on activated T cells, activated B cells, some thymocytes, myeloid precursors, and oligodendrocytes. CD25 is also found on natural CD4<sup>+</sup>Foxp3<sup>+</sup> Treg cells and a subset of human CD4<sup>+</sup> memory T cells (PMID: 22585674).

## Notable Publications

Author	Pubmed ID	Journal	Application
Yuan-Hao Wu	27875659	DNA Cell Biol	FC
Sara Vázquez-Mera	39319599	Allergy	

## Storage

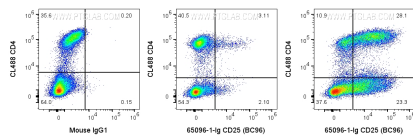
Storage:  
Store at 2-8°C. Stable for one year after shipment.

Storage Buffer:  
PBS with 0.09% sodium azide.

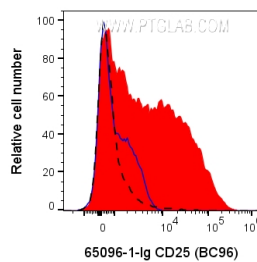
For technical support and original validation data for this product please contact:  
T: 4006900926 E: Proteintech-CN@ptglab.com W: ptgcn.com

This product is exclusively available under Proteintech Group brand and is not available to purchase from any other manufacturer.

## Selected Validation Data



1x10<sup>6</sup> human PBMCs were stimulated with Human CD3/CD28 T cell Activation Beads Kit (KMS310) for 2 days then surface stained with 0.2 ug Anti-Human CD25 (65096-1-Ig, Clone: BC96) (right) or Mouse IgG1 Isotype Control (left). 1x10<sup>6</sup> unstimulated human PBMCs were surface stained with 0.2 ug Anti-Human CD25 (65096-1-Ig, Clone:BC96) (center). All samples were then stained with CoraLite®647-conjugated AffiniPure F(ab')<sub>2</sub> Fragment Donkey Anti-Mouse IgG (H+L) at



1x10<sup>6</sup> human PBMCs were stimulated with Human CD3/CD28 T cell Activation Beads Kit (KMS310) for 2 days then surface stained with 0.2 ug Anti-Human CD25 (65096-1-Ig, Clone: BC96) (red) or Mouse IgG1 Isotype Control (blue). 1x10<sup>6</sup> unstimulated human PBMCs were surface stained with 0.2 ug Anti-Human CD25 (65096-1-Ig, Clone:BC96) (black dashed). All samples were then stained with CoraLite®647-conjugated AffiniPure F(ab')<sub>2</sub> Fragment Donkey Anti-Mouse IgG (H+L) at