

For Research Use Only

Anti-Mouse CD45.1 (A20)

Catalog Number: 65092-1-Ig **1 Publications**



Basic Information

Catalog Number: 65092-1-Ig	GenBank Accession Number: BC028512	Purification Method: Affinity purification
Size: 100ug, 0.5 mg/ml	GeneID (NCBI): 19264	CloneNo.: A20
Source: Mouse	UNIPROT ID: P06800	
Isotype: IgG2a, kappa	Full Name: protein tyrosine phosphatase, receptor type, C	

Applications

Tested Applications:
FC

Species Specificity:
mouse

Background Information

CD45, also known as protein tyrosine phosphatase, receptor type C, is a type I transmembrane protein expressed on the surface of all haematopoietic cells with the exception of erythrocytes and platelets (PMID: 3489673; 28615666). CD45 is a pan-haematopoietic cell marker and has been shown to be essential for T- and B-cell activation and signalling (PMID: 9429890; 16378097). Allelic variants of mouse CD45, CD45.1 (Ly5.1) and CD45.2 (Ly5.2), have been established as a marker system to track haematopoietic cells following congenic mouse bone marrow transplants (PMID: 28615666). CD45.2 is the common form and is expressed by most of the established strains, while CD45.1 is found in only a few like the SJL mouse strain (PMID: 3489673).

Notable Publications

Author	Pubmed ID	Journal	Application
Yunhui Jia	37970714	Arterioscler Thromb Vasc Biol	

Storage

Storage:
Store at 2-8°C. Stable for one year after shipment.
Storage Buffer:
Phosphate based buffer with 0.09% sodium azide, pH 7.2.

For technical support and original validation data for this product please contact:

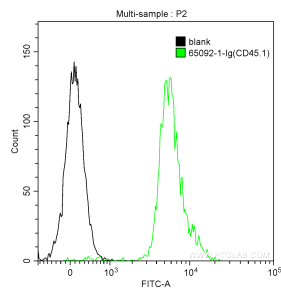
T: 4006900926

E: Proteintech-CN@ptglab.com

W: ptgcn.com

This product is exclusively available under Proteintech Group brand and is not available to purchase from any other manufacturer.

Selected Validation Data



1×10^6 SJL mouse splenocytes were surface stained with 0.25 μ g Anti-Mouse CD45.1 (65092-1-Ig, Clone:A20) and CoraLite®488-Conjugated Goat Anti-Mouse IgG(H+L) at dilution 1:1000 (green), or not stained (blank) (black). Cells were not fixed.