

For Research Use Only

Anti-Mouse FcεR1α (MAR-1)

Catalog Number: 65091-1-Ig



Basic Information

Catalog Number:

65091-1-Ig

Size:

100ug, 500 μg/ml

Source:

Armenian Hamster

Isotype:

IgG

GenBank Accession Number:

BC125455

GeneID (NCBI):

14125

Full Name:

Fc receptor, IgE, high affinity I, alpha polypeptide

Purification Method:

Affinity purification

CloneNo.:

MAR-1

Applications

Tested Applications:

FC

Species Specificity:

mouse

Background Information

Fc epsilon Receptor I alpha (FcεR1α) is a single-pass type I membrane protein that contains 2 immunoglobulin-like domains. FcεR1α forms a tetrameric complex, FcεRI, with one beta and two gamma subunits (PMID: 19406478). FcεRI is the high-affinity receptor for the Fc region of immunoglobulin E (IgE) (PMID: 1532373). It is expressed on mast cells and basophils and plays a central role in the allergic response (PMID: 2148316).

Storage

Storage:

Store at 2-8°C. Stable for one year after shipment.

Storage Buffer:

PBS with 0.1% sodium azide, pH 7.3.

For technical support and original validation data for this product please contact:

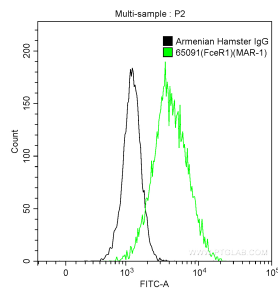
T: 4006900926

E: Proteintech-CN@ptglab.com

W: ptgcn.com

This product is exclusively available under Proteintech Group brand and is not available to purchase from any other manufacturer.

Selected Validation Data



1×10^6 MC/9 cells were surface stained with 0.25 μ g Anti-Mouse FcεR1 (65091-1-Ig, Clone: MAR-1) and CoraLite®488-Conjugated AffiniPure Goat Anti-Mouse IgG(H+L) at dilution 1:1000 (green), or stained with 0.25 μ g Armenian Hamster IgG isotype control and CoraLite®488-Conjugated AffiniPure Goat Anti-Mouse IgG(H+L) at dilution 1:1000 (black). Cells were not fixed.