

For Research Use Only

Anti-Human CD16 (3G8), PBS Only (Capture)

Catalog Number: 65090-1-PBS



Basic Information

Catalog Number: 65090-1-PBS	GenBank Accession Number: BC017865	Purification Method: Protein G purification
Concentration: 100ug, 2mg/ml	GeneID (NCBI): 2214	CloneNo.: 3G8
Source: Mouse	ENSEMBL Gene ID: ENSG00000203747	
Isotype: IgG1, kappa	Full Name: Fc fragment of IgG, low affinity IIIa, receptor (CD16a)	
	Calculated MW: 254 aa, 29 kDa	

Applications

Tested Applications:
FC, Cytometric bead array, Indirect ELISA, Sample test

Species Specificity:
human

Background Information

CD16 is a 50-70-kDa low affinity Fc receptor found on the surface of natural killer cells, neutrophil polymorphonuclear leukocytes, monocytes and macrophages. CD16 mediates antibody-dependent cellular cytotoxicity (ADCC) and other antibody-dependent responses, such as phagocytosis. CD16 has been identified as Fc receptors Fc γ RIIIa (CD16a) and Fc γ RIIIb (CD16b), encoded by two nearly identical genes, FCGR3A and the FCGR3B. Clone 3G8 recognizes both the CD16a and CD16b (PMID: 7592758).

Storage

Storage:
Store at -80°C.
The product is shipped with ice packs. Upon receipt, store it immediately at -80°C

Storage Buffer:
PBS Only

For technical support and original validation data for this product please contact:

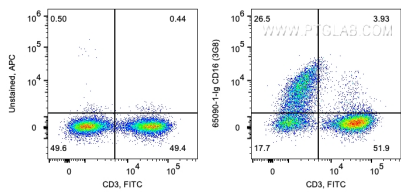
T: 4006900926

E: Proteintech-CN@ptglab.com

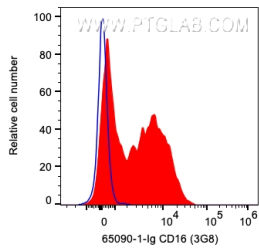
W: ptgcn.com

This product is exclusively available under Proteintech Group brand and is not available to purchase from any other manufacturer.

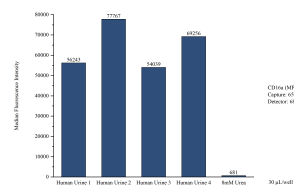
Selected Validation Data



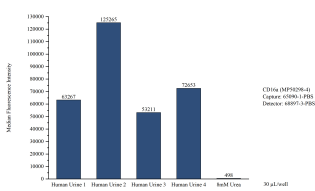
1X10⁶ human PBMCs were surface co-stained with FITC Anti-Human CD3 and 0.2 ug Anti-Human CD16 (65090-1-Ig, Clone:3G8) and APC-Goat anti-Mouse IgG at dilution 1:1000. Cells were not fixed. Lymphocytes were gated. This data was developed using the same antibody clone with 65090-1-PBS in a different storage buffer formulation.



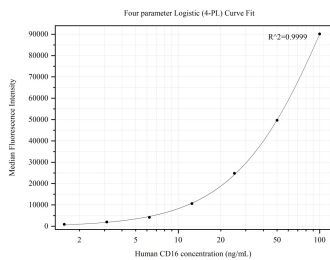
1X10⁶ human PBMCs were surface stained with 0.2 ug Anti-Human CD16 (65090-1-Ig, Clone:3G8) and APC-Goat anti-Mouse IgG at dilution 1:1000. Cells were not fixed. Lymphocytes were gated. This data was developed using the same antibody clone with 65090-1-PBS in a different storage buffer formulation.



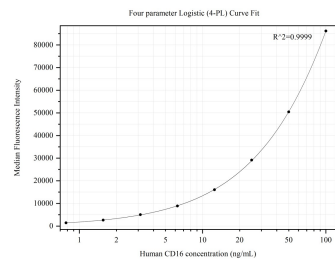
Cytometric bead array of Human urine using MP50298-3, CD16a Monoclonal Matched Antibody Pair, PBS Only. Capture antibody: 65090-1-PBS. Detection antibody: 68897-2-PBS. Urine of four individual healthy human donors was analyzed using MP50298-3.



Cytometric bead array of Human urine using MP50298-4, CD16a Monoclonal Matched Antibody Pair, PBS Only. Capture antibody: 65090-1-PBS. Detection antibody: 68897-3-PBS. Urine of four individual healthy human donors was analyzed using MP50298-4.



Cytometric bead array standard curve of MP50298-3, CD16 Monoclonal Matched Antibody Pair, PBS Only. Capture antibody: 65090-1-PBS. Detection antibody: 68897-2-PBS. Standard:Eg31662. Range: 1.563-100 ng/mL.



Cytometric bead array standard curve of MP50298-4, CD16 Monoclonal Matched Antibody Pair, PBS Only. Capture antibody: 65090-1-PBS. Detection antibody: 68897-3-PBS. Standard:Eg31662. Range: 0.781-100 ng/mL.