

For Research Use Only

# Anti-Mouse KLRG1 (2F1)

Catalog Number: 65084-1-Ig



## Basic Information

Catalog Number:

65084-1-Ig

Concentration:

100ug, 0.5 mg/ml

Source:

Syrian Hamster

Isotype:

IgG

GenBank Accession Number:

BC101953

GeneID (NCBI):

50928

UNIPROT ID:

O88713

Full Name:

killer cell lectin-like receptor  
subfamily G, member 1

Purification Method:

Affinity purification

CloneNo.:

2F1

Recommended Dilutions:

FC: 0.5 ug per 10<sup>6</sup> cells in 100  $\mu$ l  
suspension

## Applications

Tested Applications:

FC

Species Specificity:

mouse

Positive Controls:

FC : mouse splenocytes,

## Background Information

KLRG1 (killer cell lectin-like receptor subfamily G, member 1) is a C-type lectin inhibitory receptor that contains an immunoreceptor tyrosine-based inhibitory motif (ITIM) in its cytoplasmic domain. KLRG1 is expressed by subsets of NK and T cells, existing both as a monomer and as a disulfide-linked homodimer (PMID: 10741410; 19604491). It is considered to be a cell differentiation marker for NK and T cells and is strongly induced by viral and other infections (PMID: 20373518). Through interactions with members of the cadherin family, KLRG1 plays an inhibitory role on NK- and T-cell function (PMID: 19009530; 20373518).

## Storage

Storage:

Store at 2-8°C. Stable for one year after shipment.

Storage Buffer:

PBS with 0.09% sodium azide, pH7.3

For technical support and original validation data for this product please contact:

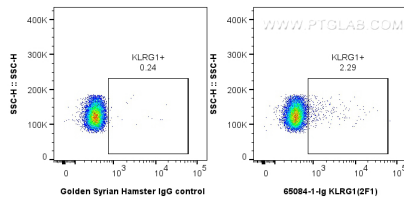
T: 4006900926

E: [Proteintech-CN@ptglab.com](mailto:Proteintech-CN@ptglab.com)

W: [ptgcn.com](http://ptgcn.com)

This product is exclusively available under Proteintech Group brand and is not available to purchase from any other manufacturer.

## Selected Validation Data



1x10<sup>6</sup> mouse splenocytes were surface stained with 0.5 ug Anti-Mouse KLRG1 (2F1) (65084-1-Ig, Clone:2F1) or 0.5 ug Isotype Control, and FITC anti-Golden Syrian Hamster IgG Antibody. Cells were not fixed.