

For Research Use Only

# Anti-Human CD45 (2D1)

Catalog Number: 65082-1-Ig



## Basic Information

Catalog Number:

65082-1-Ig

Concentration:

100ug, 0.5 mg/ml

Source:

Mouse

Isotype:

IgG1, kappa

GenBank Accession Number:

BC014239

GeneID (NCBI):

5788

ENSEMBL Gene ID:

ENSG00000081237

Full Name:

protein tyrosine phosphatase,  
receptor type, C

Purification Method:

Affinity purification

CloneNo.:

2D1

Recommended Dilutions:

IF-Fro: 1:125-1:500

FC: 0.5 ug per 10<sup>6</sup> cells in 100 µl  
suspension

## Applications

Tested Applications:

IF-Fro, FC

Species Specificity:

human

Positive Controls:

IF-Fro : mouse spleen tissue,

FC : human peripheral blood lymphocytes,

## Background Information

CD45, also known as protein tyrosine phosphatase, receptor type C, is a type I transmembrane protein expressed on the surface of all haematopoietic cells with the exception of erythrocytes and platelets (PMID: 3489673; 28615666). CD45 is a pan-haematopoietic cell marker and has been shown to be essential for T- and B-cell activation and signalling (PMID: 9429890; 16378097).

## Storage

Storage:

Store at 2-8°C. Stable for one year after shipment.

Storage Buffer:

PBS with 0.09% sodium azide, pH7.3

For technical support and original validation data for this product please contact:

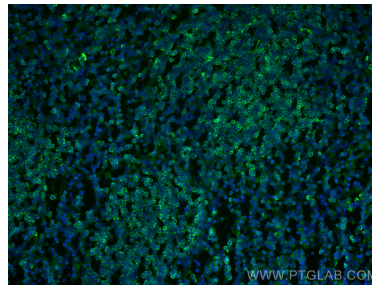
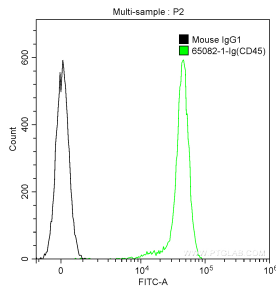
T: 4006900926

E: [Proteintech-CN@ptglab.com](mailto:Proteintech-CN@ptglab.com)

W: [ptgcn.com](http://ptgcn.com)

This product is exclusively available under Proteintech Group brand and is not available to purchase from any other manufacturer.

## Selected Validation Data



1X10<sup>6</sup> human peripheral blood lymphocytes were surface stained with 0.5 ug Anti-Human CD45 (65082-1-Ig, Clone: 2D1) and CoraLite®488-Conjugated AffiniPure Goat Anti-Mouse IgG(H+L) at dilution 1:1000 (green), or stained with 0.5 ug isotype control and CoraLite®488-Conjugated AffiniPure Goat Anti-Mouse IgG(H+L) at dilution 1:1000 (black). Cells were not fixed.

Immunofluorescent analysis of (4% PFA) fixed frozen OCT-embedded mouse spleen tissue using CD45 antibody (65082-1-Ig, Clone: 2D1 ) at dilution of 1:250 and CoraLite®488-Conjugated AffiniPure Goat Anti-Mouse IgG(H+L) (SA00013-1).