

For Research Use Only

Anti-Human PD-L1/CD274 (29E.2A3)

Catalog Number: 65081-1-Ig **3 Publications**



Basic Information

Catalog Number: 65081-1-Ig	GenBank Accession Number: BC069381	Purification Method: Affinity purification
Size: 100ug, 0.5 mg/ml	GeneID (NCBI): 29126	CloneNo.: 29E.2A3
Source: Mouse	UNIPROT ID: Q9NZQ7	
Isotype: IgG2b, kappa	Full Name: CD274 molecule	

Applications

Tested Applications:
FC

Species Specificity:
human

Cited Species:
human

Background Information

Programmed cell death ligand 1 (PD-L1, CD274, or B7-H1), is the first member of B7 family to be discovered. B7 family molecules are type I transmembrane proteins belonging to the immunoglobulin superfamily. In concert with their CD28 family receptors, the B7s are key regulators of the adaptive immune response. PD-L1 is suggested as a negative regulator of T and B cell, and plays important role in mediating tolerance of lymphocytes to self-antigens. It is also involved in the costimulatory signal, essential for T-cell proliferation and production of IL10 and IFNG, in an IL2-dependent and a PD-1-independent manner.

Notable Publications

Author	Pubmed ID	Journal	Application
Qian Qian Yang	39481625	Acta Biomater	
Hamza Hanieh	39400777	Inflammation	
Yuting Zhang	38723861	Transl Res	

Storage

Storage:
Store at 2-8°C. Stable for one year after shipment.

Storage Buffer:
PBS with 0.09% sodium azide.

For technical support and original validation data for this product please contact:

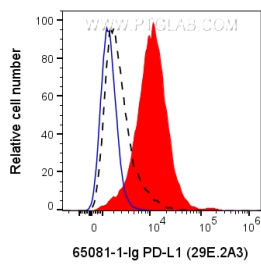
T: 4006900926

E: Proteintech-CN@ptglab.com

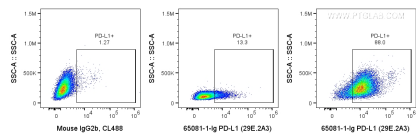
W: ptgcn.com

This product is exclusively available under Proteintech Group brand and is not available to purchase from any other manufacturer.

Selected Validation Data



1X10⁶ PHA treated (3d) human PBMCs were surface stained with 0.2 ug Anti-Human PD-L1 (B7-H1) (65081-1-Ig, Clone:29E.2A3) and CoraLite®488-Conjugated AffiniPure Goat Anti-Mouse IgG(H+L) at dilution 1:1000 (red), or Mouse IgG2b Isotype Control (blue). 1X10⁶ untreated human PBMCs were surface stained with 0.2 ug Anti-Human PD-L1 (B7-H1) (65081-1-Ig, Clone:29E.2A3) and CoraLite®488-Conjugated AffiniPure Goat Anti-Mouse IgG(H+L) at dilution 1:1000 (black dashed).



1X10⁶ PHA treated (3d) human PBMCs were surface stained with 0.2 ug Anti-Human PD-L1 (B7-H1) (65081-1-Ig, Clone:29E.2A3) and CoraLite®488-Conjugated AffiniPure Goat Anti-Mouse IgG(H+L) at dilution 1:1000 (right), or Mouse IgG2b Isotype Control (left). 1X10⁶ untreated human PBMCs were surface stained with 0.2 ug Anti-Human PD-L1 (B7-H1) (65081-1-Ig, Clone:29E.2A3) and CoraLite®488-Conjugated AffiniPure Goat Anti-Mouse IgG(H+L) at dilution 1:1000 (center). Cells