

For Research Use Only

Anti-Mouse Ly-6G (1A8)

Catalog Number: 65078-1-Ig **6 Publications**



Basic Information

Catalog Number:

65078-1-Ig

Concentration:

100ug, 500 μ g/ml

Source:

Rat

Isotype:

IgG2a, kappa

GenBank Accession Number:

X70920

GeneID (NCBI):

546644

Full Name:

Lymphocyte antigen 6 complex, locus G

Purification Method:

Affinity purification

CloneNo.:

1A8

Applications

Tested Applications:

FC

Cited Applications:

IHC, IF

Species Specificity:

mouse

Cited Species:

mouse

Background Information

Ly-6G (Lymphocyte antigen 6 complex, locus G), also known as Gr-1, is a 21-25 kDa, glycosylphosphatidylinositol-anchored protein expressed on myeloid lineage cells in mouse bone marrow (PMID: 8360469). The expression of Ly-6G increases on neutrophils as they differentiate from immature cells in the bone marrow to mature cells in the blood and spleen (PMID: 8890901). Antibodies targeting Ly6G (RB6-8C5 or 1A8) are commonly used in studies aimed at identifying the role of neutrophils (PMID: 23543767). The 1A8 mAb is specific for Ly-6G (PMID: 8360469).

Notable Publications

Author	Pubmed ID	Journal	Application
Qinyao Li	39742788	Biochem Biophys Res Commun	IHC
Junyan Wang	39550027	J Adv Res	IF
Ge Zhao	39464476	ACS Omega	IHC

Storage

Storage:

Store at 2-8°C. Stable for one year after shipment.

Storage Buffer:

PBS with 0.09% sodium azide.

For technical support and original validation data for this product please contact:

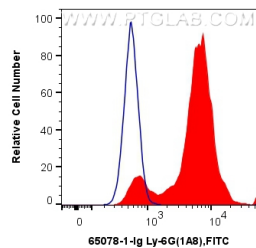
T: 4006900926

E: Proteintech-CN@ptglab.com

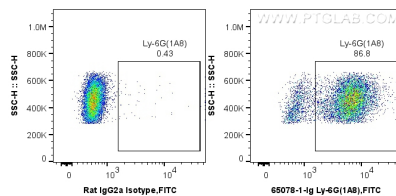
W: ptgcn.com

This product is exclusively available under Proteintech Group brand and is not available to purchase from any other manufacturer.

Selected Validation Data



1X10⁶ mouse bone marrow cells were surface stained with 0.5 ug Anti-Mouse Ly-6G (65078-1-Ig, Clone:1A8) and FITC anti-Rat IgG2a Antibody at dilution 1:100 (red), or 0.5 ug Control Antibody. Cells were not fixed.



1X10⁶ mouse bone marrow cells were surface stained with 0.5 ug Anti-Mouse Ly-6G (65078-1-Ig, Clone:1A8) and FITC anti-Rat IgG2a Antibody at dilution 1:100, or 0.5 ug Control Antibody. Cells were not fixed.