

For Research Use Only

Anti-Mouse CD3 ϵ (145-2C11)

Catalog Number: 65060-1-Ig



Basic Information

Catalog Number: 65060-1-Ig	GenBank Accession Number: BC098236	Purification Method: Affinity purification
Concentration: 500ug, 0.5 mg/mL	GeneID (NCBI): 12501	CloneNo.: 145-2C11
Source: Hamster	UNIPROT ID: P22646	Recommended Dilutions: IF/ICC 1:250-1:1000
Isotype: IgG	Full Name: CD3 antigen, epsilon polypeptide	

Applications

Tested Applications: IF/ICC, FC	Positive Controls: IF/ICC : mouse splenocytes,
Species Specificity: mouse	

Background Information

CD3 is a multimeric protein associated with the T-cell receptor (TCR) to form a complex involved in antigen recognition and signal transduction (PMID: 15885124). CD3 is composed of CD3 γ , δ , ϵ , and ζ chains (PMID: 1826255). It is expressed by thymocytes in a developmentally regulated manner, T cells, and some NK cells (PMID: 3289580). The TCR recognizes antigens bound to major histocompatibility complex (MHC) molecules. TCR-mediated peptide-MHC recognition is transmitted to the CD3 complex, leading to the intracellular signal transduction (PMID: 11985657).

Storage

Storage:
Store at 2-8°C. Stable for one year after shipment.
Storage Buffer:
PBS with 0.09% sodium azide.

For technical support and original validation data for this product please contact:

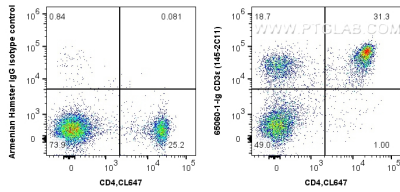
T: 4006900926

E: Proteintech-CN@ptglab.com

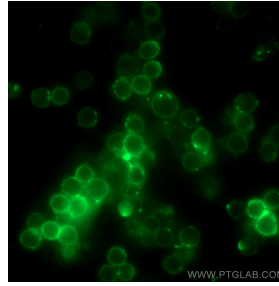
W: ptgcn.com

This product is exclusively available under Proteintech Group brand and is not available to purchase from any other manufacturer.

Selected Validation Data



1X10⁶ C57BL/6 mouse splenocytes were surface co-stained with CoraLite® Plus 647 Anti-Mouse CD4 (GK1.5) and 0.5 ug Anti-Mouse CD3 ε (65060-1-Ig, Clone:145-2C11) or 0.5 ug Armenian Hamster IgG Isotype Control, and FITC anti-Armenian Hamster IgG antibody at dilution 1:100. Cells were not fixed.



Immunofluorescent analysis of mouse splenocytes using CD3 ε antibody (65060-1-Ig, Clone: 145-2C11) at dilution of 1:500 and FITC Goat anti-Hamster(Armenian) IgG.