

For Research Use Only

# Anti-Mouse CD107b / LAMP2 (ABL-93)



Catalog Number: 65052-1-Ig **1 Publications**

## Basic Information

<b>Catalog Number:</b> 65052-1-Ig	<b>GenBank Accession Number:</b> BC138718	<b>Purification Method:</b> Affinity purification
<b>Size:</b> 500ug, 0.5 mg/mL	<b>GeneID (NCBI):</b> 16784	<b>CloneNo.:</b> ABL-93
<b>Source:</b> Rat	<b>UNIPROT ID:</b> P17047	<b>Recommended Dilutions:</b> IF/ICC 1:50-1:500
<b>Isotype:</b> IgG2a, kappa	<b>Full Name:</b> lysosomal-associated membrane protein 2	

## Applications

<b>Tested Applications:</b> IF/ICC, FC (Intra)	<b>Positive Controls:</b> IF/ICC : NIH/3T3 cells,
<b>Cited Applications:</b> IF	
<b>Species Specificity:</b> Mouse	
<b>Cited Species:</b> mouse	

## Background Information

LAMP2 (CD107b) is a Lysosomal membrane glycoprotein. LAMP2 is extensively glycosylated with asparagine-linked oligosaccharides which protect it from intracellular proteolysis (PMID: 10521503). Although LAMP-2 is localized primarily in the endosome-lysosomal membrane of cells, it is also found on the plasma membrane under certain circumstances, e.g., after platelet activation, during granulocytic differentiation and activation, and in some tumor cells (PMID: 12221139). LAMP is involved in lysosomal stability and autophagy (PMID: 12221139). This glycoprotein provides selectins with carbohydrate ligands. LAMP2 may plays a role in tumor cell metastasis (PMID 9426697).

## Notable Publications

Author	Pubmed ID	Journal	Application
Dongming Lv	37480849	Cell Rep Med	IF

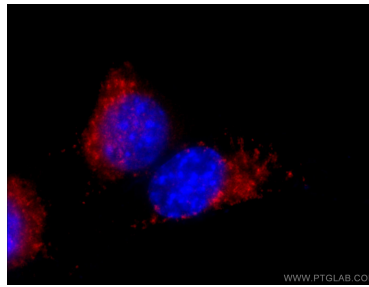
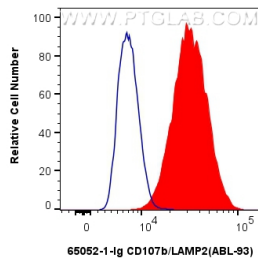
## Storage

**Storage:**  
Store at 2-8°C. Stable for one year after shipment.  
**Storage Buffer:**  
PBS with 0.09% sodium azide.

For technical support and original validation data for this product please contact:  
T: 4006900926 E: Proteintech-CN@ptglab.com W: ptgcn.com

This product is exclusively available under Proteintech Group brand and is not available to purchase from any other manufacturer.

## Selected Validation Data



$1 \times 10^6$  NIH/3T3 cells were intracellularly stained with 0.5  $\mu$ g Anti-Mouse CD107b / LAMP2 (65052-1-Ig, Clone: ABL-93) and FITC anti-Rat IgG2a Antibody (red), or 0.5  $\mu$ g Rat IgG2a Isotype Control (2A3) (65209-1-Ig, Clone: 2A3) and FITC anti-Rat IgG2a Antibody (blue). Cells were fixed with 4% PFA and permeabilized with Flow Cytometry Perm Buffer (PF00011-C).

Immunofluorescent analysis of (4% PFA) fixed NIH/3T3 cells using 65052-1-Ig (CD107b antibody) at dilution of 1:100 and Rhodamine (TRITC)-conjugated Goat Anti-Rat IgG(H+L).