

For Research Use Only

Anti-Mouse CD107a / LAMP1 (1D4B)

Catalog Number: 65050-1-Ig **4 Publications**



Basic Information

Catalog Number: 65050-1-Ig	GenBank Accession Number: BC006785	Purification Method: Protein G purification
Concentration: 100ug, 0.5 mg/mL	GeneID (NCBI): 16783	CloneNo.: 1D4B
Source: Rat	UNIPROT ID: P11438	Recommended Dilutions: IF/ICC 1:50-1:500
Isotype: IgG2a, kappa	Full Name: lysosomal-associated membrane protein 1	

Applications

Tested Applications: IF/ICC, FC (Intra)	Positive Controls: IF/ICC : NIH/3T3 cells,
Cited Applications: IF	
Species Specificity: mouse	
Cited Species: mouse	

Background Information

LAMP1 (CD107a) is a heavily glycosylated membrane protein enriched in the lysosomal membrane. LAMP1 is extensively glycosylated with asparagine-linked oligosaccharides which protect it from intracellular proteolysis (PMID: 10521503). Although LAMP1 is expressed largely in the endosome-lysosomal membrane of cells, it is also found on the plasma membrane (PMID: 16168398). Elevated LAMP1 expression at the cell surface has also been detected during platelet and granulocytic cell activation, as well as in some tumor cells (PMID: 29085473). LAMP1 functions to provide selectins with carbohydrate ligands. This protein has also been shown to be a marker of degranulation on lymphocytes such as CD8+ and NK cells and may also play a role in tumor cell differentiation and metastasis (PMID: 18835598; 29085473; 9426697).

Notable Publications

Author	Pubmed ID	Journal	Application
Panpan Wang	39183331	Mol Neurodegener	IF
Li Wang	38513294	J Leukoc Biol	IF
Weidong Le	37292937	Res Sq	IF

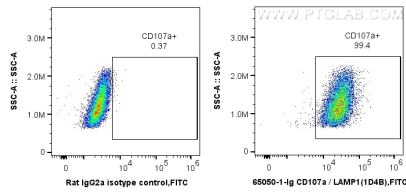
Storage

Storage:
Store at 2-8°C. Stable for one year after shipment.
Storage Buffer:
PBS with 0.09% sodium azide.

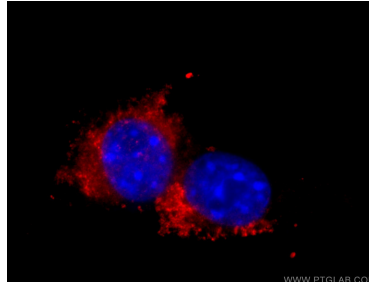
For technical support and original validation data for this product please contact:
T: 4006900926 E: Proteintech-CN@ptglab.com W: ptgcn.com

This product is exclusively available under Proteintech Group brand and is not available to purchase from any other manufacturer.

Selected Validation Data



1X10⁶ NIH/3T3 cells were intracellularly stained with 0.5 ug Anti-Mouse CD107a / LAMP1 (65050-1-Ig, Clone:1D4B) and FITC anti-Rat IgG2a antibody at dilution 1:100, or 0.5 ug Rat IgG2a Isotype Control (2A3) (65209-1-Ig, Clone: 2A3) and FITC anti-Rat IgG2a antibody at dilution 1:100. Cells were fixed with 4% PFA and permeabilized with Flow Cytometry Perm Buffer (PF00011-C).



Immunofluorescent analysis of (4% PFA) fixed NIH/3T3 cells using 65050-1-Ig (CD107a antibody) at dilution of 1:100 and Rhodamine (TRITC)-conjugated Goat Anti-Rat IgG(H+L).