

For Research Use Only

Chk1 Monoclonal antibody

Catalog Number: 65016-1-Ig **1 Publications**



Basic Information

Catalog Number:

65016-1-Ig

Size:

1000 µg/ml

Source:

Mouse

Isotype:

IgG1

GenBank Accession Number:

BC004202

GeneID (NCBI):

1111

UNIPROT ID:

O14757

Full Name:

CHK1 checkpoint homolog (S. pombe)

Calculated MW:

54 kDa

Observed MW:

54 kDa

Purification Method:

Protein G purification

Recommended Dilutions:

WB 1:500-1:2000

IHC 1:20-1:200

Applications

Tested Applications:

IHC, WB, ELISA

Cited Applications:

IF, IHC, WB

Species Specificity:

human, mouse

Cited Species:

mouse

Note-IHC: suggested antigen retrieval with TE buffer pH 9.0; (*) Alternatively, antigen retrieval may be performed with citrate buffer pH 6.0

Positive Controls:

WB : K562 cells, K-562

IHC : Prostate cancer tissue, human prostate cancer

Background Information

In response to DNA damage, mammalian cells prevent cell cycle progression through the control of critical cell cycle regulators. Chk1 (synonym: CHEK1), a homolog of the Schizosaccharomyces pombe Chk1 protein kinase, is required for the DNA damage checkpoint. Human Chk1 protein is modified in response to DNA damage. In vitro Chk1 binds to and phosphorylate the dual-specificity protein phosphatases Cdc25A, Cdc25B, and Cdc25C, which control cell cycle transitions by dephosphorylating cyclin-dependent kinases.

Notable Publications

Author	Pubmed ID	Journal	Application
Tho L M LM	21804609	Oncogene	WB, IHC, IF

Storage

Storage:

Store at 2-8°C.

Storage Buffer:

PBS with 0.1% sodium azide and 50% glycerol pH 7.3.

For technical support and original validation data for this product please contact:

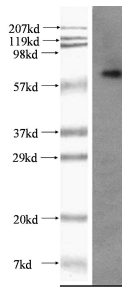
T: 4006900926

E: Proteintech-CN@ptglab.com

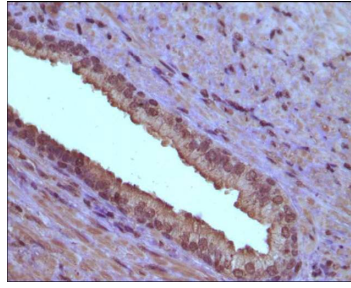
W: ptgcn.com

This product is exclusively available under Proteintech Group brand and is not available to purchase from any other manufacturer.

Selected Validation Data



K562 cells were subjected to SDS PAGE followed by western blot with 65016-1-Ig (CHK1 Antibody) at dilution of 1:1000.



Immunohistochemical of paraffin-embedded Prostate cancer using 65016-1-Ig (CHK1 Antibody) at Dilution 1:100.