

For Research Use Only

PHLPP2 Monoclonal antibody, PBS Only (Capture)

Catalog Number: 61111-1-PBS



Basic Information

Catalog Number:

61111-1-PBS

Source:

Mouse

Isotype:

IgG1

Immunogen Catalog Number:

AG19000

GenBank Accession Number:

BC129927

GeneID (NCBI):

23035

UNIPROT ID:

Q6ZVD8

Full Name:

PH domain and leucine rich repeat
protein phosphatase-like

Calculated MW:

1323 aa, 147 kDa

Purification Method:

Protein G Magarose purification

CloneNo.:

1C4H12

Applications

Tested Applications:

Cytometric bead array, Indirect ELISA

Species Specificity:

human

Background Information

Storage

Storage:

Store at -80°C.

The product is shipped with ice packs. Upon receipt, store it immediately at -80°C

Storage Buffer:

PBS only, pH7.3

For technical support and original validation data for this product please contact:

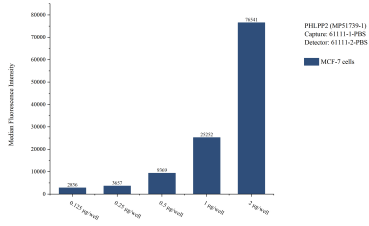
T: 4006900926

E: Proteintech-CN@ptglab.com

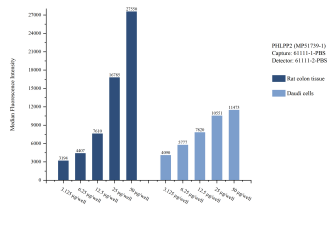
W: ptgcn.com

This product is exclusively available under Proteintech Group brand and is not available to purchase from any other manufacturer.

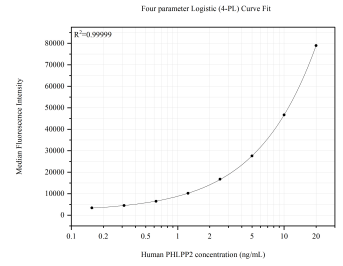
Selected Validation Data



Cytometric bead array sample test of MP51739-1, PHLPP2 Monoclonal Matched Antibody Pair, PBS Only. Capture antibody: 61111-1-PBS. Detection antibody: 61111-2-PBS.



Cytometric bead array sample test of MP51739-1, PHLPP2 Monoclonal Matched Antibody Pair, PBS Only. Capture antibody: 61111-1-PBS. Detection antibody: 61111-2-PBS.



Cytometric bead array standard curve of MP51739-1, PHLPP2 Monoclonal Matched Antibody Pair, PBS Only. Capture antibody: 61111-1-PBS. Detection antibody: 61111-2-PBS. Standard: Ag19000. Range: 0.156-20 ng/mL.