

For Research Use Only

# CTAK1 Monoclonal antibody, PBS Only (Capture)

Catalog Number: 61082-1-PBS



## Basic Information

Catalog Number:

61082-1-PBS

Source:

Mouse

Isotype:

IgG1

Immunogen Catalog Number:

AG8303

GenBank Accession Number:

BC024773

GeneID (NCBI):

4140

UNIPROT ID:

P27448

Full Name:

MAP/microtubule affinity-regulating  
kinase 3

Calculated MW:

78 kDa, 80 kDa

Purification Method:

Protein G Magarose purification

CloneNo.:

1D9H11

## Applications

Tested Applications:

Cytometric bead array, Indirect ELISA

Species Specificity:

human

## Background Information

### Storage

Storage:

Store at -80°C.

**The product is shipped with ice packs. Upon receipt, store it immediately at -80°C**

Storage Buffer:

PBS only, pH7.3

For technical support and original validation data for this product please contact:

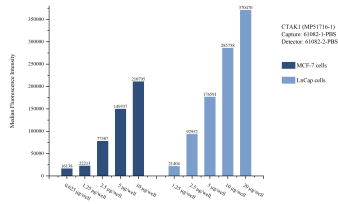
T: 4006900926

E: [Proteintech-CN@ptglab.com](mailto:Proteintech-CN@ptglab.com)

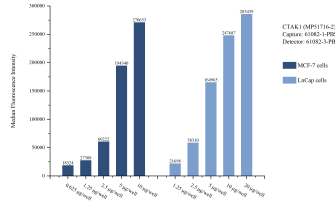
W: [ptgcn.com](http://ptgcn.com)

**This product is exclusively available under Proteintech Group brand and is not available to purchase from any other manufacturer.**

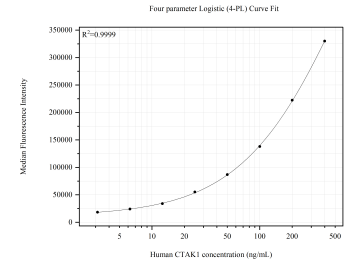
## Selected Validation Data



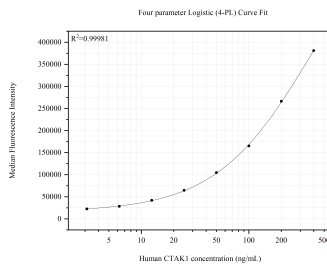
Cytometric bead array sample test of MP51716-1, CTAK1 Monoclonal Matched Antibody Pair, PBS Only. Capture antibody: 61082-1-PBS. Detection antibody: 61082-2-PBS.



Cytometric bead array sample test of MP51716-2, CTAK1 Monoclonal Matched Antibody Pair, PBS Only. Capture antibody: 61082-1-PBS. Detection antibody: 61082-3-PBS.



Cytometric bead array standard curve of MP51716-1, CTAK1 Monoclonal Matched Antibody Pair, PBS Only. Capture antibody: 61082-1-PBS. Detection antibody: 61082-2-PBS. Standard: Ag8303. Range: 3.125-400 ng/mL



Cytometric bead array standard curve of MP51716-2, CTAK1 Monoclonal Matched Antibody Pair, PBS Only. Capture antibody: 61082-1-PBS. Detection antibody: 61082-3-PBS. Standard: Ag8303. Range: 3.125-400 ng/mL