

For Research Use Only

MAPK6 Monoclonal antibody, PBS Only (Detector)

Catalog Number: 61058-2-PBS



Basic Information

Catalog Number: 61058-2-PBS	GenBank Accession Number: BC035492	Purification Method: Protein G Magarose purification
Source: Mouse	GeneID (NCBI): 5597	CloneNo.: 2F10E2
Isotype: IgG1	UNIPROT ID: Q16659	
Immunogen Catalog Number: AG28703	Full Name: mitogen-activated protein kinase 6	
	Calculated MW: 83 kDa	

Applications

Tested Applications:
Cytometric bead array, Indirect ELISA

Species Specificity:
human

Background Information

Storage

Storage:
Store at -80°C.
The product is shipped with ice packs. Upon receipt, store it immediately at -80°C

Storage Buffer:
PBS only, pH7.3

For technical support and original validation data for this product please contact:

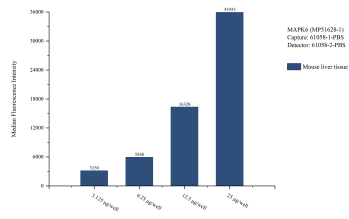
T: 4006900926

E: Proteintech-CN@ptglab.com

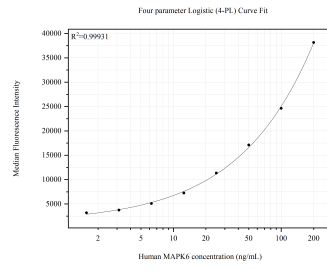
W: ptgcn.com

This product is exclusively available under Proteintech Group brand and is not available to purchase from any other manufacturer.

Selected Validation Data



Cytometric bead array sample test of MP51628-1, MAPK6 Monoclonal Matched Antibody Pair, PBS Only. Capture antibody: 61058-1-PBS. Detection antibody: 61058-2-PBS.



Cytometric bead array standard curve of MP51628-1, MAPK6 Monoclonal Matched Antibody Pair, PBS Only. Capture antibody: 61058-1-PBS. Detection antibody: 61058-2-PBS. Standard: Ag28703. Range: 1.563-200 ng/mL.