

For Research Use Only

# Serpin B3 Monoclonal antibody, PBS Only (Detector)

Catalog Number: 61051-2-PBS



## Basic Information

<b>Catalog Number:</b> 61051-2-PBS	<b>GenBank Accession Number:</b> BC005224	<b>Purification Method:</b> Protein G Magarose purification
<b>Source:</b> Mouse	<b>GeneID (NCBI):</b> 6317	<b>CloneNo.:</b> 3C6A5
<b>Isotype:</b> IgG1	<b>UNIPROT ID:</b> P29508	
<b>Immunogen Catalog Number:</b> AG8553	<b>Full Name:</b> serpin peptidase inhibitor, clade B (ovalbumin), member 3	
	<b>Calculated MW:</b> 390 aa, 45 kDa	

## Applications

**Tested Applications:**  
Cytometric bead array, Indirect ELISA

**Species Specificity:**  
human

## Background Information

### Storage

**Storage:**  
Store at -80°C.  
**The product is shipped with ice packs. Upon receipt, store it immediately at -80°C**

**Storage Buffer:**  
PBS only, pH7.3

For technical support and original validation data for this product please contact:

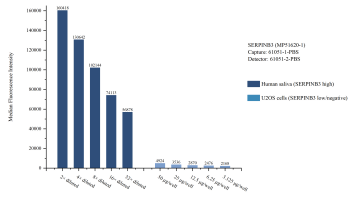
T: 4006900926

E: [Proteintech-CN@ptglab.com](mailto:Proteintech-CN@ptglab.com)

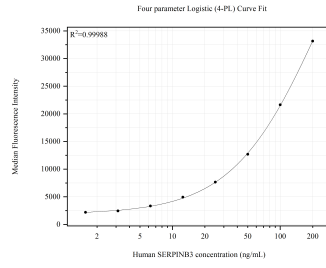
W: [ptgcn.com](http://ptgcn.com)

**This product is exclusively available under Proteintech Group brand and is not available to purchase from any other manufacturer.**

## Selected Validation Data



Cytometric bead array sample test of MP51620-1, SERPINF3 Monoclonal Matched Antibody Pair, PBS Only. Capture antibody: 61051-1-PBS. Detection antibody: 61051-2-PBS.



Cytometric bead array standard curve of MP51620-1, SERPINF3 Monoclonal Matched Antibody Pair, PBS Only. Capture antibody: 61051-1-PBS. Detection antibody: 61051-2-PBS. Standard: Ag8553. Range: 1.563-200 ng/mL.