

For Research Use Only

Serpin B3 Monoclonal antibody, PBS Only (Capture)

Catalog Number: 61051-1-PBS



Basic Information

Catalog Number:

61051-1-PBS

Source:

Mouse

Isotype:

IgG1

Immunogen Catalog Number:

AG8553

GenBank Accession Number:

BC005224

GeneID (NCBI):

6317

UNIPROT ID:

P29508

Full Name:

serpin peptidase inhibitor, clade B (ovalbumin), member 3

Calculated MW:

390 aa, 45 kDa

Purification Method:

Protein G purification

CloneNo.:

1G4D12

Applications

Tested Applications:

Cytometric bead array, Indirect ELISA

Species Specificity:

human

Background Information

Storage

Storage:

Store at -80°C.

The product is shipped with ice packs. Upon receipt, store it immediately at -80°C

Storage Buffer:

PBS only, pH7.3

For technical support and original validation data for this product please contact:

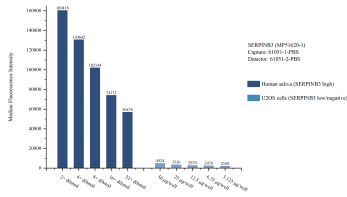
T: 4006900926

E: Proteintech-CN@ptglab.com

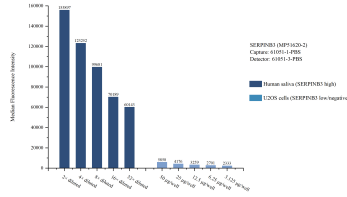
W: ptgcn.com

This product is exclusively available under Proteintech Group brand and is not available to purchase from any other manufacturer.

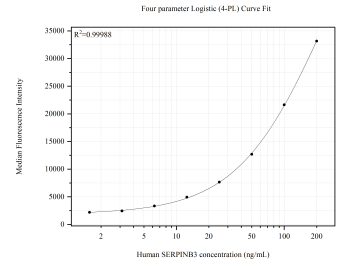
Selected Validation Data



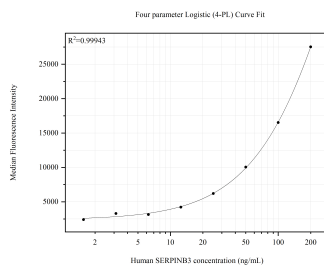
Cytometric bead array sample test of MP51620-1, SERPINB3 Monoclonal Matched Antibody Pair, PBS Only. Capture antibody: 61051-1-PBS. Detection antibody: 61051-2-PBS.



Cytometric bead array sample test of MP51620-2, SERPINB3 Monoclonal Matched Antibody Pair, PBS Only. Capture antibody: 61051-1-PBS. Detection antibody: 61051-3-PBS.



Cytometric bead array standard curve of MP51620-1, SERPINB3 Monoclonal Matched Antibody Pair, PBS Only. Capture antibody: 61051-1-PBS. Detection antibody: 61051-2-PBS. Standard: Ag8553. Range: 1.563-200 ng/mL.



Cytometric bead array standard curve of MP51620-2, SERPINB3 Monoclonal Matched Antibody Pair, PBS Only. Capture antibody: 61051-1-PBS. Detection antibody: 61051-3-PBS. Standard: Ag8553. Range: 1.563-200 ng/mL.