

For Research Use Only

# KCNA2 Monoclonal antibody, PBS Only (Capture)

Catalog Number: 61044-1-PBS



## Basic Information

Catalog Number:

61044-1-PBS

Source:

Mouse

Isotype:

IgG1

Immunogen Catalog Number:

AG5639

GenBank Accession Number:

BC043564

GeneID (NCBI):

3737

UNIPROT ID:

P16389

Full Name:

potassium voltage-gated channel,  
shaker-related subfamily, member 2

Calculated MW:

499 aa, 57 kDa

Purification Method:

Protein G purification

CloneNo.:

3F11C11

## Applications

Tested Applications:

Cytometric bead array, Indirect ELISA

Species Specificity:

human

## Background Information

### Storage

Storage:

Store at -80°C.

**The product is shipped with ice packs. Upon receipt, store it immediately at -80°C**

Storage Buffer:

PBS only, pH7.3

For technical support and original validation data for this product please contact:

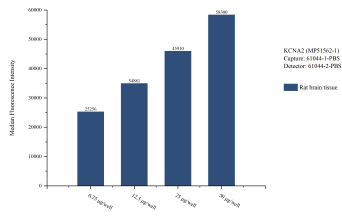
T: 4006900926

E: [Proteintech-CN@ptglab.com](mailto:Proteintech-CN@ptglab.com)

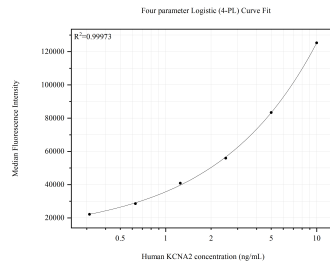
W: [ptgcn.com](http://ptgcn.com)

**This product is exclusively available under Proteintech Group brand and is not available to purchase from any other manufacturer.**

## Selected Validation Data



Cytometric bead array sample test of MP51562-1, KCNA2 Monoclonal Matched Antibody Pair, PBS Only. Capture antibody: 61044-1-PBS. Detection antibody: 61044-2-PBS.



Cytometric bead array standard curve of MP51562-1, KCNA2 Monoclonal Matched Antibody Pair, PBS Only. Capture antibody: 61044-1-PBS. Detection antibody: 61044-2-PBS. Standard: Ag5639. Range: 0.313-10 ng/mL.