

For Research Use Only

STAU1 Monoclonal antibody, PBS Only

Catalog Number: 61024-1-PBS



Basic Information

Catalog Number:

61024-1-PBS

Source:

Mouse

Isotype:

IgG1

Immunogen Catalog Number:

AG5573

GenBank Accession Number:

BC050432

GeneID (NCBI):

6780

UNIPROT ID:

O95793

Full Name:

stau1, RNA binding protein,
homolog 1 (Drosophila)

Calculated MW:

63 kDa

Observed MW:

55-65 kDa

Purification Method:

Protein G purification

CloneNo.:

1H1D7

Applications

Tested Applications:

WB, Indirect ELISA

Species Specificity:

human, mouse, rat, rabbit

Background Information

Staufen1 (STAU1)-mediated mRNA decay (SMD) degrades translationally active mRNAs that bind the double-stranded (ds)RNA binding protein STAU1 within their 3'-untranslated regions (3'UTRs) [PMID:21307942]. STAU1 can bind to stem structures and protect Dvl2 mRNA from degradation by associating with the secondary structure in the U1 region which is located at 5' position of second U stretch in the U2 region [PMID:17510634]. It has a role in specific positioning of mRNAs at given sites in the cell by cross-linking cytoskeletal and RNA components, and in stimulating their translation at the site.

Storage

Storage:

Store at -80°C.

The product is shipped with ice packs. Upon receipt, store it immediately at -80°C

Storage Buffer:

PBS only, pH7.3

For technical support and original validation data for this product please contact:

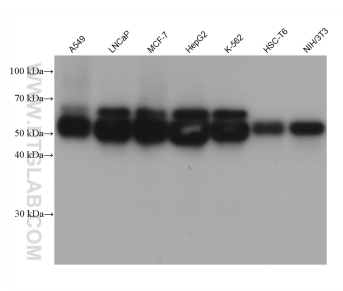
T: 4006900926

E: Proteintech-CN@ptglab.com

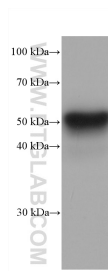
W: ptgcn.com

This product is exclusively available under Proteintech Group brand and is not available to purchase from any other manufacturer.

Selected Validation Data



Various lysates were subjected to SDS PAGE followed by western blot with 61024-1-Ig (STAU1 antibody) at dilution of 1:10000 incubated at room temperature for 1.5 hours. This data was developed using the same antibody clone with 61024-1-PBS in a different storage buffer formulation.



rabbit liver tissue were subjected to SDS PAGE followed by western blot with 61024-1-Ig (STAU1 antibody) at dilution of 1:10000 incubated at room temperature for 1.5 hours. This data was developed using the same antibody clone with 61024-1-PBS in a different storage buffer formulation.