

For Research Use Only

# COL2A1 Monoclonal antibody, PBS Only (Capture)

Catalog Number: 61014-1-PBS



## Basic Information

Catalog Number:

61014-1-PBS

Source:

Mouse

Isotype:

IgG1

Immunogen Catalog Number:

AG29295

GenBank Accession Number:

BC007252

GeneID (NCBI):

1280

UNIPROT ID:

P02458

Full Name:

collagen, type II, alpha 1

Calculated MW:

134 kDa

Purification Method:

Protein G Magarose purification

CloneNo.:

1B8F9

## Applications

Tested Applications:

Cytometric bead array, Indirect ELISA

Species Specificity:

human

## Background Information

### Storage

Storage:

Store at -80°C.

The product is shipped with ice packs. Upon receipt, store it immediately at -80°C

Storage Buffer:

PBS only, pH7.3

For technical support and original validation data for this product please contact:

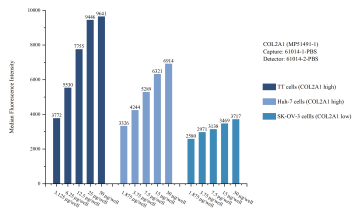
T: 4006900926

E: [Proteintech-CN@ptglab.com](mailto:Proteintech-CN@ptglab.com)

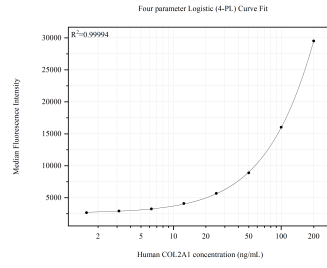
W: [ptgcn.com](http://ptgcn.com)

This product is exclusively available under Proteintech Group brand and is not available to purchase from any other manufacturer.

## Selected Validation Data



Cytometric bead array sample test of MP51491-1, COL2A1 Monoclonal Matched Antibody Pair, PBS Only. Capture antibody: 61014-1-PBS. Detection antibody: 61014-2-PBS.



Cytometric bead array standard curve of MP51491-1, COL2A1 Monoclonal Matched Antibody Pair, PBS Only. Capture antibody: 61014-1-PBS. Detection antibody: 61014-2-PBS. Standard: Ag29295. Range: 1.563-200 ng/mL