

For Research Use Only

# FUS/TLS Monoclonal antibody, PBS Only (Detector)

Catalog Number: 61012-1-PBS



## Basic Information

|   |   |   |
|---|---|---|
| <b>Catalog Number:</b><br>61012-1-PBS       | <b>GenBank Accession Number:</b><br>BC026062                                | <b>Purification Method:</b><br>Protein G purification |
| <b>Source:</b><br>Mouse                     | <b>GeneID (NCBI):</b><br>2521   | <b>CloneNo.:</b><br>1E3D12                            |
| <b>Isotype:</b><br>IgG1                     | <b>UNIPROT ID:</b><br>P35637  |   |
| <b>Immunogen Catalog Number:</b><br>AG31799 | <b>Full Name:</b><br>fusion (involved in t(12;16) in malignant liposarcoma) |   |
|   | <b>Calculated MW:</b><br>75 kDa   |   |

## Applications

**Tested Applications:**  
Cytometric bead array, Indirect ELISA

**Species Specificity:**  
human

## Background Information

### Storage

**Storage:**  
Store at -80°C.  
**The product is shipped with ice packs. Upon receipt, store it immediately at -80°C**

**Storage Buffer:**  
PBS only, pH7.3

For technical support and original validation data for this product please contact:

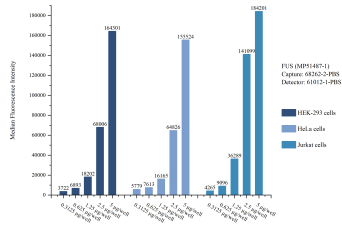
T: 4006900926

E: [Proteintech-CN@ptglab.com](mailto:Proteintech-CN@ptglab.com)

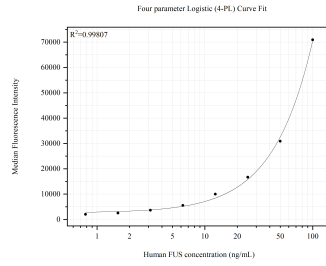
W: [ptgcn.com](http://ptgcn.com)

**This product is exclusively available under Proteintech Group brand and is not available to purchase from any other manufacturer.**

## Selected Validation Data



Cytometric bead array sample test of MP51487-1, FUS Monoclonal Matched Antibody Pair, PBS Only. Capture antibody: 68262-2-PBS. Detection antibody: 61012-1-PBS.



Cytometric bead array standard curve of MP51487-1, FUS Monoclonal Matched Antibody Pair, PBS Only. Capture antibody: 68262-2-PBS. Detection antibody: 61012-1-PBS. Standard: Ag2150. Range: 0.781-100 ng/mL