

For Research Use Only

# WBP11 Monoclonal antibody, PBS Only (Detector)

Catalog Number: 61005-2-PBS



## Basic Information

Catalog Number:

61005-2-PBS

Source:

Mouse

Isotype:

IgG1

Immunogen Catalog Number:

AG0366

GenBank Accession Number:

BC001621

GeneID (NCBI):

51729

UNIPROT ID:

Q9Y2W2

Full Name:

WW domain binding protein 11

Calculated MW:

70 kDa

Purification Method:

Protein G Magarose purification

CloneNo.:

1E3H6

## Applications

Tested Applications:

Cytometric bead array, Indirect ELISA

Species Specificity:

human

## Background Information

### Storage

Storage:

Store at -80°C.

The product is shipped with ice packs. Upon receipt, store it immediately at -80°C

Storage Buffer:

PBS only, pH7.3

For technical support and original validation data for this product please contact:

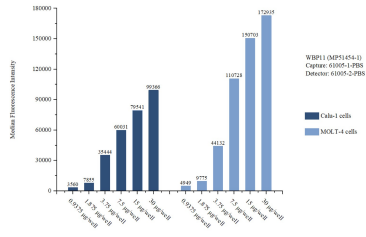
T: 4006900926

E: [Proteintech-CN@ptglab.com](mailto:Proteintech-CN@ptglab.com)

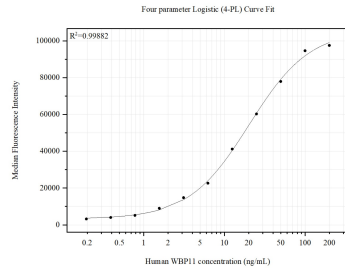
W: [ptgcn.com](http://ptgcn.com)

This product is exclusively available under Proteintech Group brand and is not available to purchase from any other manufacturer.

## Selected Validation Data



Cytometric bead array sample test of MP51454-1, WBP11 Monoclonal Matched Antibody Pair, PBS Only. Capture antibody: 61005-1-PBS. Detection antibody: 61005-2-PBS.



Cytometric bead array standard curve of MP51454-1, WBP11 Monoclonal Matched Antibody Pair, PBS Only. Capture antibody: 61005-1-PBS. Detection antibody: 61005-2-PBS. Standard: Ag0366. Range: 0.195-200 ng/mL