

For Research Use Only

# LIN54 Monoclonal antibody, PBS Only (Detector)

Catalog Number: 60985-2-PBS



## Basic Information

Catalog Number: 60985-2-PBS	GenBank Accession Number: BC109278	Purification Method: Protein G purification
Concentration: 1 mg/ml	GeneID (NCBI): 132660	CloneNo.: 1H7E10
Source: Mouse	UNIPROT ID: Q6MZP7	
Isotype: IgG1	Full Name: lin-54 homolog (C. elegans)	
Immunogen Catalog Number: AG24509	Calculated MW: 749 aa, 79 kDa	

## Applications

**Tested Applications:**  
Cytometric bead array, Indirect ELISA

**Species Specificity:**  
human

## Background Information

### Storage

**Storage:**  
Store at -80°C.  
**The product is shipped with ice packs. Upon receipt, store it immediately at -80°C**

**Storage Buffer:**  
PBS only, pH7.3

For technical support and original validation data for this product please contact:

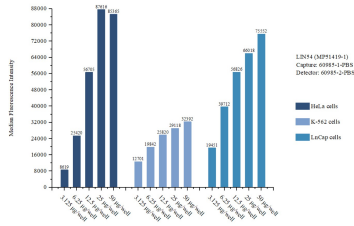
T: 4006900926

E: [Proteintech-CN@ptglab.com](mailto:Proteintech-CN@ptglab.com)

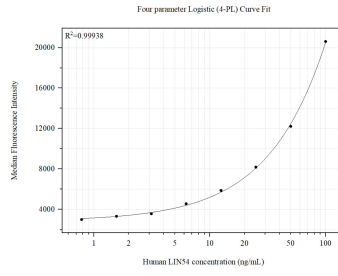
W: [ptgcn.com](http://ptgcn.com)

**This product is exclusively available under Proteintech Group brand and is not available to purchase from any other manufacturer.**

## Selected Validation Data



Cytometric bead array sample test of MP51419-1, LIN54 Monoclonal Matched Antibody Pair, PBS Only. Capture antibody: 60985-1-PBS. Detection antibody: 60985-2-PBS.



Cytometric bead array standard curve of MP51419-1, LIN54 Monoclonal Matched Antibody Pair, PBS Only. Capture antibody: 60985-1-PBS. Detection antibody: 60985-2-PBS. Standard: Ag24509. Range: 0.781-100 ng/mL.