

For Research Use Only

KLF10 Monoclonal antibody, PBS Only (Detector)

Catalog Number: 60983-2-PBS



Basic Information

Catalog Number: 60983-2-PBS	GenBank Accession Number: BC011538	Purification Method: Protein G Magarose purification
Concentration: 1 mg/ml	GeneID (NCBI): 7071	CloneNo.: 2H1H11
Source: Mouse	UNIPROT ID: Q13118	
Isotype: IgG1	Full Name: Kruppel-like factor 10	
Immunogen Catalog Number: AG31754	Calculated MW: 469 aa, 51 kDa	

Applications

Tested Applications:
Cytometric bead array, Indirect ELISA

Species Specificity:
human

Background Information

Storage

Storage:
Store at -80°C.
The product is shipped with ice packs. Upon receipt, store it immediately at -80°C

Storage Buffer:
PBS only, pH7.3

For technical support and original validation data for this product please contact:

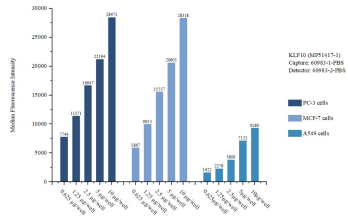
T: 4006900926

E: Proteintech-CN@ptglab.com

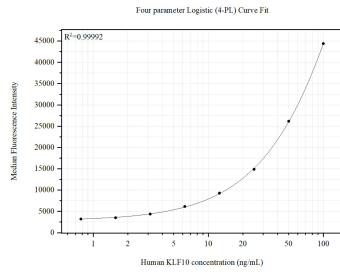
W: ptgcn.com

This product is exclusively available under Proteintech Group brand and is not available to purchase from any other manufacturer.

Selected Validation Data



Sample test of MP51417-1, KLF10 Monoclonal Matched Antibody Pair, PBS Only. Capture antibody: 60983-1-PBS. Detection antibody: 60983-2-PBS.



Cytometric bead array standard curve of MP51417-1, KLF10 Monoclonal Matched Antibody Pair, PBS Only. Capture antibody: 60983-1-PBS. Detection antibody: 60983-2-PBS. Standard: Ag31754. Range: 0.781-100 ng/mL.