

For Research Use Only

BRD3 Monoclonal antibody, PBS Only (Capture)

Catalog Number: 60971-1-PBS



Basic Information

Catalog Number: 60971-1-PBS	GenBank Accession Number: BC032124	Purification Method: Protein G purification
Source: Mouse	GeneID (NCBI): 8019	CloneNo.: 1C8C11
Isotype: IgG1	UNIPROT ID: Q15059	
Immunogen Catalog Number: AG33684	Full Name: bromodomain containing 3	
	Calculated MW: 556 aa, 61 kDa	
	Observed MW: 95-105 kDa	

Applications

Tested Applications:
WB, Cytometric bead array, Indirect ELISA

Species Specificity:
human, mouse, rat

Background Information

BRD3 belongs to the BET family that a small group of unique, highly conserved bromodomain-containing genes with four members in mouse and human. There are BRD2, BRD3, BRD4 and BRDT. And BET family proteins all localize in the nucleus, and contain two tandem N-terminal BRDs, an extra-terminal (ET) domain and a more divergent C-terminal recruitment domain (PMID:25849938). BRD2, BRD3, and BRD4 play key roles in transcription of genes required for both inflammation and cancer. Northern hybridization revealed that BRD3 is most abundant in testis, ovary, placenta, uterus, and brain (PMID:15261828; PMID:27451123).

Storage

Storage:
Store at -80°C.
The product is shipped with ice packs. Upon receipt, store it immediately at -80°C

Storage Buffer:
PBS only, pH7.3

For technical support and original validation data for this product please contact:

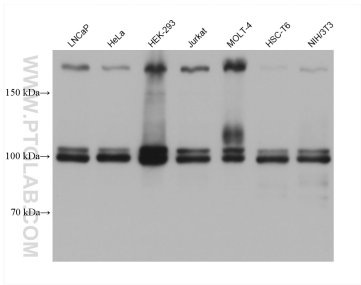
T: 4006900926

E: Proteintech-CN@ptglab.com

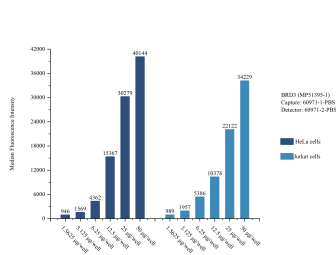
W: ptgcn.com

This product is exclusively available under Proteintech Group brand and is not available to purchase from any other manufacturer.

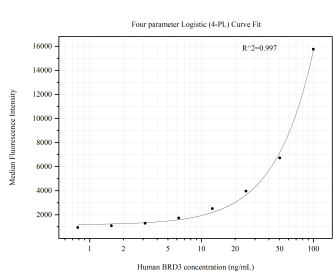
Selected Validation Data



Various lysates were subjected to SDS PAGE followed by western blot with 60971-1-Ig (BRD3 antibody) at dilution of 1:10000 incubated at room temperature for 1.5 hours. This data was developed using the same antibody clone with 60971-1-PBS in a different storage buffer formulation.



Sample test of MP51395-1, BRD3 Monoclonal Matched Antibody Pair, PBS Only. Capture antibody: 60971-1-PBS. Detection antibody: 60971-2-PBS.



Cytometric bead array standard curve of MP51395-1, BRD3 Monoclonal Matched Antibody Pair, PBS Only. Capture antibody: 60971-1-PBS. Detection antibody: 60971-2-PBS. Standard: Ag33684. Range: 0.781-100 ng/mL.