

For Research Use Only

# DDHD2 Monoclonal antibody, PBS Only (Detector)

Catalog Number: 60965-2-PBS



## Basic Information

<b>Catalog Number:</b> 60965-2-PBS	<b>GenBank Accession Number:</b> BC010504	<b>Purification Method:</b> Protein G Magarose purification
<b>Concentration:</b> 1 mg/ml	<b>GeneID (NCBI):</b> 23259	<b>CloneNo.:</b> 3E1C9
<b>Source:</b> Mouse	<b>UNIPROT ID:</b> O94830	
<b>Isotype:</b> IgG1	<b>Full Name:</b> DDHD domain containing 2	
<b>Immunogen Catalog Number:</b> AG18391	<b>Calculated MW:</b> 711 aa, 81 kDa	

## Applications

**Tested Applications:**  
Cytometric bead array, Indirect ELISA, Sample test

**Species Specificity:**  
human

## Background Information

### Storage

**Storage:**  
Store at -80°C.  
**The product is shipped with ice packs. Upon receipt, store it immediately at -80°C**

**Storage Buffer:**  
PBS only, pH7.3

For technical support and original validation data for this product please contact:

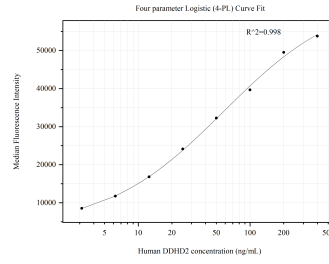
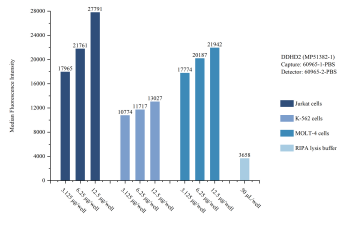
T: 4006900926

E: [Proteintech-CN@ptglab.com](mailto:Proteintech-CN@ptglab.com)

W: [ptgcn.com](http://ptgcn.com)

**This product is exclusively available under Proteintech Group brand and is not available to purchase from any other manufacturer.**

## Selected Validation Data



Sample test of MP51382-1, DDHD2 Monoclonal Matched Antibody Pair, PBS Only. Capture antibody: 60965-1-PBS. Detection antibody: 60965-2-PBS.

Cytometric bead array standard curve of MP51382-1, DDHD2 Monoclonal Matched Antibody Pair, PBS Only. Capture antibody: 60965-1-PBS. Detection antibody: 60965-2-PBS. Standard: Ag18391. Range: 3.125-400 ng/mL.