

For Research Use Only

GLP1R Monoclonal antibody

Catalog Number: 60931-1-Ig



Basic Information

Catalog Number: 60931-1-Ig	GenBank Accession Number: BC112126	Purification Method: Protein G purification
Concentration: 1000 ug/ml	GeneID (NCBI): 2740	CloneNo.: 1A4G5
Source: Mouse	UNIPROT ID: P43220	Recommended Dilutions: IF/ICC: 1:250-1:1000
Isotype: IgG1	Full Name: glucagon-like peptide 1 receptor	
Immunogen Catalog Number: AG23529	Calculated MW: 463 aa, 53 kDa	

Applications

Tested Applications: IF/ICC, ELISA	Positive Controls: IF/ICC : rat pancreas tissue,
Species Specificity: human, rat	

Background Information

GLP1R (glucagon-like peptide-1 receptor) is a G protein-coupled receptor belonging to the secretin receptor superfamily, also known as class B (PMID:34911028). GLP1R is widely distributed in pancreatic islets, muscles, the gastrointestinal tract, the lung, liver, pancreas, and other tissues or organs (PMID:35989517). Moreover, GLP1R agonist has been reported to induce autophagy of EC (Endometrial carcinoma) cells, and high GLP1R expression may be associated with good prognosis of EC patients, suggesting that GLP1R is likely to participate in the progression of EC (PMID:29907137). Moreover, regarding the molecular weight of GLP1R, research shows that the bands at ~50 kDa and ~100 kDa belong to the monomer and dimer states of GLP1R (PMID: 28609478).

Storage

Storage:
Store at -20°C. Stable for one year after shipment.
Storage Buffer:
PBS with 0.02% sodium azide and 50% glycerol, pH7.3
Aliquoting is unnecessary for -20°C storage

For technical support and original validation data for this product please contact:

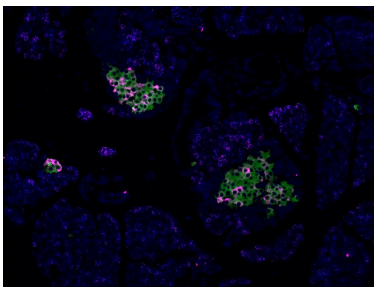
T: 4006900926

E: Proteintech-CN@ptglab.com

W: ptgcn.com

This product is exclusively available under Proteintech Group brand and is not available to purchase from any other manufacturer.

Selected Validation Data



FFPE-rat pancreas tissue was stained with GLP1R monoclonal antibody (Cat.NO. 60931-1-Ig) at 1:500 followed by detection with Multi-rAb® Polymer HRP-Goat Anti-Rabbit/Mouse Universal Recombinant Secondary Antibody (H+L) (Cat.NO. RGAU011). CoraLite®Plus 647-Tyramide Reagent (Cat.NO. PR30025) was used for signal development (purple). The slide was then conducted HIER in pH 9.0 Tris-EDTA buffer followed by staining with INS monoclonal

