

For Research Use Only

# RBM3 Monoclonal antibody, PBS Only (Detector)

Catalog Number: 60925-3-PBS



## Basic Information

Catalog Number:

60925-3-PBS

Concentration:

1 mg/ml

Source:

Mouse

Isotype:

IgG1

Immunogen Catalog Number:

AG28329

GenBank Accession Number:

BC006825

GeneID (NCBI):

5935

UNIPROT ID:

P98179

Full Name:

RNA binding motif (RNP1, RRM)

protein 3

Calculated MW:

17 kDa

Purification Method:

Protein G Magarose purification

CloneNo.:

1E8E1

## Applications

Tested Applications:

Cytometric bead array, Indirect ELISA, Sample test

Species Specificity:

human

## Background Information

### Storage

Storage:

Store at -80°C.

**The product is shipped with ice packs. Upon receipt, store it immediately at -80°C**

Storage Buffer:

PBS only, pH7.3

For technical support and original validation data for this product please contact:

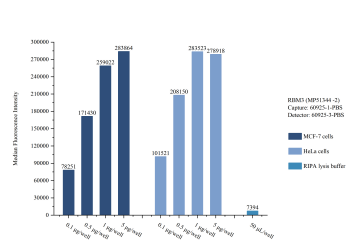
T: 4006900926

E: [Proteintech-CN@ptglab.com](mailto:Proteintech-CN@ptglab.com)

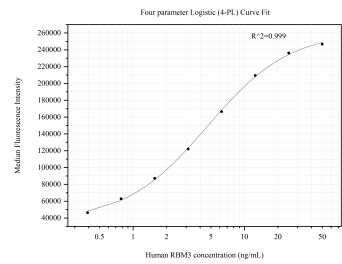
W: [ptgcn.com](http://ptgcn.com)

**This product is exclusively available under Proteintech Group brand and is not available to purchase from any other manufacturer.**

# Selected Validation Data



Sample test of MP51344-2, RBM3 Monoclonal Matched Antibody Pair, PBS Only. Capture antibody: 60925-1-PBS. Detection antibody: 60925-3-PBS.



Cytometric bead array standard curve of MP51344-2, RBM3 Monoclonal Matched Antibody Pair, PBS Only. Capture antibody: 60925-1-PBS. Detection antibody: 60925-3-PBS. Standard:Ag28329. Range: 0.391-50 ng/mL.