

For Research Use Only

RBM3 Monoclonal antibody, PBS Only (Capture)

Catalog Number: 60925-1-PBS



Basic Information

Catalog Number:

60925-1-PBS

Concentration:

1 mg/ml

Source:

Mouse

Isotype:

IgG1

Immunogen Catalog Number:

AG28329

GenBank Accession Number:

BC006825

GeneID (NCBI):

5935

UNIPROT ID:

P98179

Full Name:

RNA binding motif (RNP1, RRM)

protein 3

Calculated MW:

17 kDa

Purification Method:

Protein G Magarose purification

CloneNo.:

2D2G1

Applications

Tested Applications:

Cytometric bead array, Indirect ELISA, Sample test

Species Specificity:

human

Background Information

Storage

Storage:

Store at -80°C.

The product is shipped with ice packs. Upon receipt, store it immediately at -80°C

Storage Buffer:

PBS only, pH7.3

For technical support and original validation data for this product please contact:

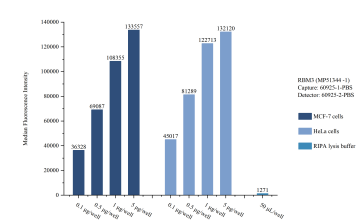
T: 4006900926

E: Proteintech-CN@ptglab.com

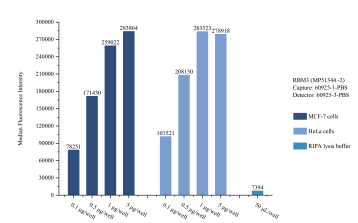
W: ptgcn.com

This product is exclusively available under Proteintech Group brand and is not available to purchase from any other manufacturer.

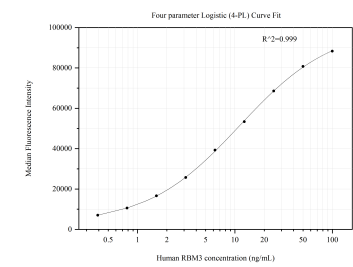
Selected Validation Data



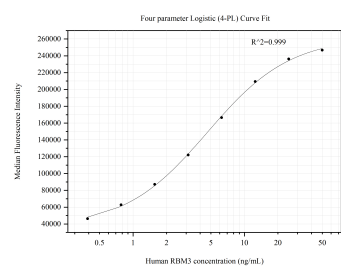
Sample test of MP51344-1, RBM3 Monoclonal Matched Antibody Pair, PBS Only. Capture antibody: 60925-1-PBS. Detection antibody: 60925-2-PBS.



Sample test of MP51344-2, RBM3 Monoclonal Matched Antibody Pair, PBS Only. Capture antibody: 60925-1-PBS. Detection antibody: 60925-3-PBS.



Cytometric bead array standard curve of MP51344-1, RBM3 Monoclonal Matched Antibody Pair, PBS Only. Capture antibody: 60925-1-PBS. Detection antibody: 60925-2-PBS. Standard:Ag28329. Range: 0.391-100 ng/mL



Cytometric bead array standard curve of MP51344-2, RBM3 Monoclonal Matched Antibody Pair, PBS Only. Capture antibody: 60925-1-PBS. Detection antibody: 60925-3-PBS. Standard:Ag28329. Range: 0.391-50 ng/mL