

For Research Use Only

# POLR2I Monoclonal antibody, PBS Only (Capture)

Catalog Number: 60923-1-PBS



## Basic Information

Catalog Number:

60923-1-PBS

Concentration:

1 mg/ml

Source:

Mouse

Isotype:

IgG1

Immunogen Catalog Number:

AG11219

GenBank Accession Number:

BC017112

GeneID (NCBI):

5438

UNIPROT ID:

P36954

Full Name:

polymerase (RNA) II (DNA directed)

polypeptide I, 14.5kDa

Calculated MW:

125 aa, 15 kDa

Purification Method:

Protein G Magarose purification

CloneNo.:

1C11E6

## Applications

Tested Applications:

Cytometric bead array, Indirect ELISA, Sample test

Species Specificity:

human

## Background Information

### Storage

Storage:

Store at -80°C.

**The product is shipped with ice packs. Upon receipt, store it immediately at -80°C**

Storage Buffer:

PBS only, pH7.3

For technical support and original validation data for this product please contact:

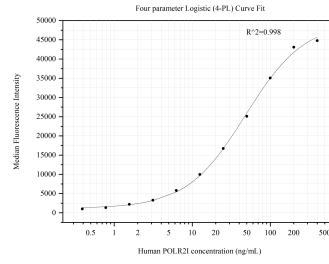
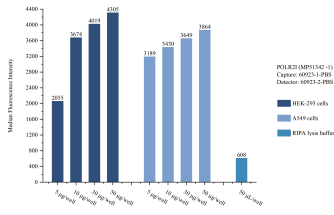
T: 4006900926

E: [Proteintech-CN@ptglab.com](mailto:Proteintech-CN@ptglab.com)

W: [ptgcn.com](http://ptgcn.com)

**This product is exclusively available under Proteintech Group brand and is not available to purchase from any other manufacturer.**

## Selected Validation Data



Sample test of MP51342-1, POLR21 Monoclonal Matched Antibody Pair, PBS Only. Capture antibody: 60923-1-PBS. Detection antibody: 60923-2-PBS.

Cytometric bead array standard curve of MP51342-1, POLR21 Monoclonal Matched Antibody Pair, PBS Only. Capture antibody: 60923-1-PBS. Detection antibody: 60923-2-PBS. Standard: Ag11219. Range: 0.391-400 ng/mL