

For Research Use Only

E-cadherin Monoclonal antibody

Catalog Number:60902-1-Ig



Basic Information

| | | |
|--|--|---|
| Catalog Number: 60902-1-Ig | GenBank Accession Number: NM_004360.5 | Purification Method: Protein G purification |
| Source: Mouse | GeneID (NCBI): 999 | CloneNo.: 3F6F3 |
| Isotype: IgG1 | UNIPROT ID: P12830-1 | Recommended Dilutions: WB: 1:5000-1:50000 IHC: 1:4000-1:16000 IF/ICC: 1:2000-1:8000 |
| Immunogen Catalog Number: EG1112 | Full Name: cadherin 1, type 1, E-cadherin (epithelial) | |
| | Calculated MW: 97 kDa | |
| | Observed MW: 120 kDa | |

Applications

Tested Applications:
WB, IHC, IF/ICC, ELISA

Species Specificity:
human

Note-IHC: suggested antigen retrieval with TE buffer pH 9.0; (*) Alternatively, antigen retrieval may be performed with citrate buffer pH 6.0

Positive Controls:

WB : HepG2 cells, LNCaP cells, A431 cells, MCF-7 cells

IHC : human stomach cancer tissue, human colon cancer tissue

IF/ICC : HaCaT cells,

Background Information

Cadherins are a family of transmembrane glycoproteins that mediate calcium-dependent cell-cell adhesion and play an important role in the maintenance of normal tissue architecture. E-cadherin (epithelial cadherin), also known as CDH1 (cadherin 1) or CAM 120/80, is a classical member of the cadherin superfamily which also include N-, P-, R-, and B-cadherins. E-cadherin is expressed on the cell surface in most epithelial tissues. The extracellular region of E-cadherin establishes calcium-dependent homophilic trans binding, providing specific interaction with adjacent cells, while the cytoplasmic domain is connected to the actin cytoskeleton through the interaction with p120-, α -, β -, and γ -catenin (plakoglobin). E-cadherin is important in the maintenance of the epithelial integrity, and is involved in mechanisms regulating proliferation, differentiation, and survival of epithelial cell. E-cadherin may also play a role in tumorigenesis. It is considered to be an invasion suppressor protein and its loss is an indicator of high tumor aggressiveness. E-cadherin is sensitive to trypsin digestion in the absence of Ca²⁺.

Storage

Storage:

Store at -20°C. Stable for one year after shipment.

Storage Buffer:

PBS with 0.02% sodium azide and 50% glycerol, pH7.3

Aliquoting is unnecessary for -20°C storage

For technical support and original validation data for this product please contact:

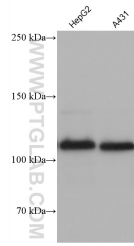
T: 4006900926

E: Proteintech-CN@ptglab.com

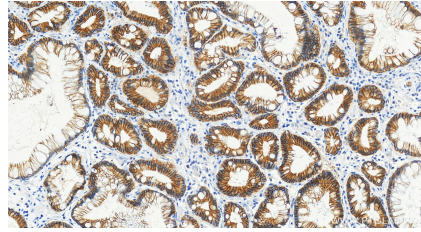
W: ptgcn.com

This product is exclusively available under Proteintech Group brand and is not available to purchase from any other manufacturer.

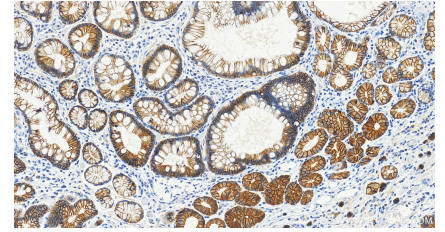
Selected Validation Data



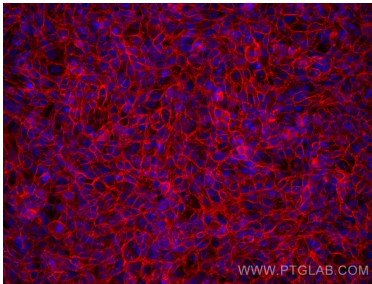
Various lysates were subjected to SDS PAGE followed by western blot with 60902-1-Ig (E-cadherin antibody) at dilution of 1:20000 incubated at room temperature for 1.5 hours.



Immunohistochemical analysis of paraffin-embedded human stomach cancer tissue slide using 60902-1-Ig (E-cadherin antibody) at dilution of 1:8000 (under 20x lens). Heat mediated antigen retrieval with Tris-EDTA buffer (pH 9.0).



Immunohistochemical analysis of paraffin-embedded human stomach cancer tissue slide using 60902-1-Ig (E-cadherin antibody) at dilution of 1:8000 (under 20x lens). Heat mediated antigen retrieval with Tris-EDTA buffer (pH 9.0).



Immunofluorescent analysis of (4% PFA) fixed HaCaT cells using E-cadherin antibody (60902-1-Ig, Clone: 3F6F3) at dilution of 1:4000 and Multi-rAb CoraLite® Plus 594-Goat Anti-Mouse Recombinant Secondary Antibody (H+L) (Cat.NO. RGAM004).