

For Research Use Only

CFLAR Monoclonal antibody, PBS Only (Capture)

Catalog Number: 60901-1-PBS



Basic Information

Catalog Number: 60901-1-PBS	GenBank Accession Number: BC001602	Purification Method: Protein G purification
Concentration: 1 mg/ml	GeneID (NCBI): 8837	CloneNo.: 3D12F5
Source: Mouse	UNIPROT ID: O15519	
Isotype: IgG1	Full Name: CASP8 and FADD-like apoptosis regulator	
Immunogen Catalog Number: AG31024	Calculated MW: 52 kDa	

Applications

Tested Applications:
Cytometric bead array, Indirect ELISA, Sample test

Species Specificity:
human

Background Information

Storage

Storage:
Store at -80°C.
The product is shipped with ice packs. Upon receipt, store it immediately at -80°C

Storage Buffer:
PBS only, pH7.3

For technical support and original validation data for this product please contact:

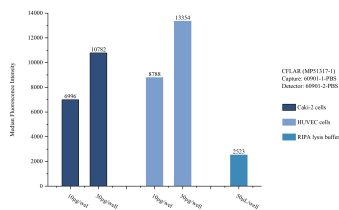
T: 4006900926

E: Proteintech-CN@ptglab.com

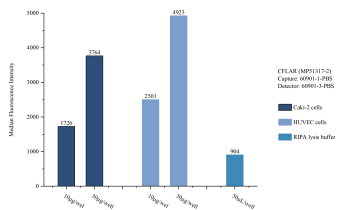
W: ptgcn.com

This product is exclusively available under Proteintech Group brand and is not available to purchase from any other manufacturer.

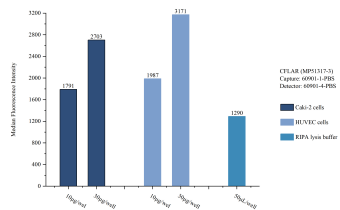
Selected Validation Data



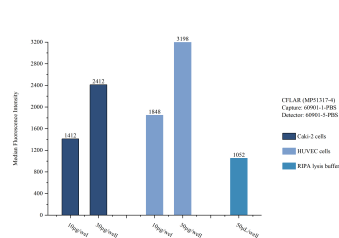
Sample test of MP51317-1, CFLAR Monoclonal Matched Antibody Pair, PBS Only. Capture antibody: 60901-1-PBS. Detection antibody: 60901-2-PBS.



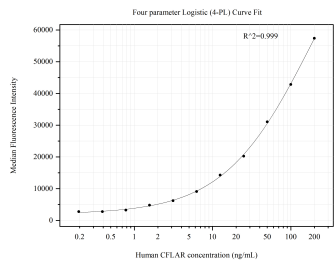
Sample test of MP51317-2, CFLAR Monoclonal Matched Antibody Pair, PBS Only. Capture antibody: 60901-1-PBS. Detection antibody: 60901-3-PBS.



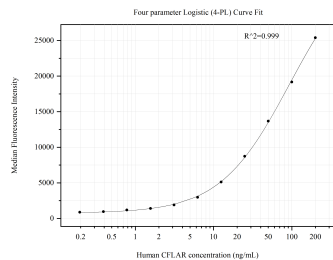
Sample test of MP51317-3, CFLAR Monoclonal Matched Antibody Pair, PBS Only. Capture antibody: 60901-1-PBS. Detection antibody: 60901-4-PBS.



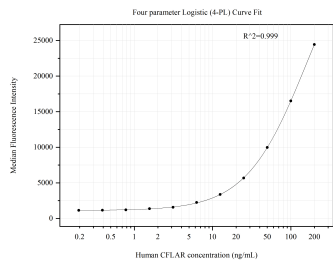
Sample test of MP51317-4, CFLAR Monoclonal Matched Antibody Pair, PBS Only. Capture antibody: 60901-1-PBS. Detection antibody: 60901-5-PBS.



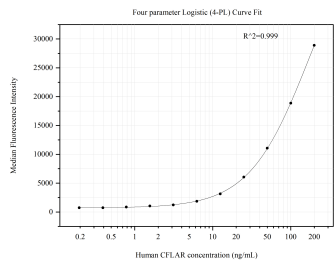
Cytometric bead array standard curve of MP51317-1, CFLAR Monoclonal Matched Antibody Pair, PBS Only. Capture antibody: 60901-1-PBS. Detection antibody: 60901-2-PBS. Standard:Ag31024. Range: 0.391-200 ng/mL



Cytometric bead array standard curve of MP51317-2, CFLAR Monoclonal Matched Antibody Pair, PBS Only. Capture antibody: 60901-1-PBS. Detection antibody: 60901-3-PBS. Standard:Ag31024. Range: 0.391-200 ng/mL



Cytometric bead array standard curve of MP51317-3, CFLAR Monoclonal Matched Antibody Pair, PBS Only. Capture antibody: 60901-1-PBS. Detection antibody: 60901-4-PBS. Standard:Ag31024. Range: 0.391-200 ng/mL



Cytometric bead array standard curve of MP51317-4, CFLAR Monoclonal Matched Antibody Pair, PBS Only. Capture antibody: 60901-1-PBS. Detection antibody: 60901-5-PBS. Standard:Ag31024. Range: 0.781-200 ng/mL