

For Research Use Only

NKCC1/SLC12A2 Monoclonal antibody, PBS Only (Detector)

Catalog Number: 60887-2-PBS



Basic Information

Catalog Number:

60887-2-PBS

Concentration:

1 mg/ml

Source:

Mouse

Isotype:

IgG1

Immunogen Catalog Number:

AG27901

GenBank Accession Number:

BC033003

GeneID (NCBI):

6558

UNIPROT ID:

P55011

Full Name:

solute carrier family 12
(sodium/potassium/chloride
transporters), member 2

Calculated MW:

131 kDa

Purification Method:

Protein G Magarose purification

CloneNo.:

2B8C4

Applications

Tested Applications:

Cytometric bead array, Indirect ELISA

Species Specificity:

human

Background Information

Storage

Storage:

Store at -80°C.

The product is shipped with ice packs. Upon receipt, store it immediately at -80°C

Storage Buffer:

PBS only, pH7.3

For technical support and original validation data for this product please contact:

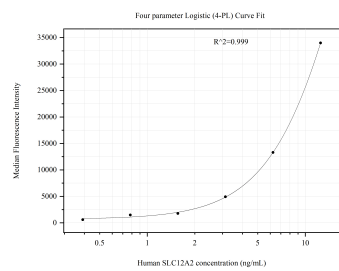
T: 4006900926

E: Proteintech-CN@ptglab.com

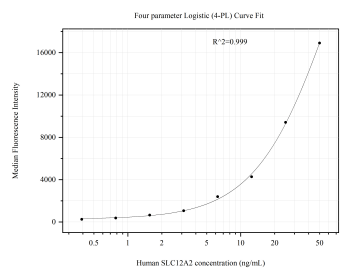
W: ptgcn.com

This product is exclusively available under Proteintech Group brand and is not available to purchase from any other manufacturer.

Selected Validation Data



Cytometric bead array standard curve of MP51301-1, SLC12A2 Monoclonal Matched Antibody Pair, PBS Only. Capture antibody: 60887-1-PBS. Detection antibody: 60887-2-PBS. Standard:Ag27901. Range: 0.195-12.5 ng/mL



Cytometric bead array standard curve of MP51301-2, SLC12A2 Monoclonal Matched Antibody Pair, PBS Only. Capture antibody: 60887-3-PBS. Detection antibody: 60887-2-PBS. Standard:Ag27901. Range: 0.391-50 ng/mL