

MLH1 Monoclonal antibody

Catalog Number: 60822-2-Ig

Basic Information

Catalog Number: 60822-2-Ig	GenBank Accession Number: BC006850	Purification Method: Protein G purification
Size: 1000 µg/ml	GeneID (NCBI): 4292	CloneNo.: 2D5A2
Source: Mouse	UNIPROT ID: P40692	Recommended Dilutions: IHC 1:1000-1:4000
Isotype: IgG1	Full Name: mutL homolog 1, colon cancer, nonpolyposis type 2 (E. coli)	
Immunogen Catalog Number: AG27723	Calculated MW: 756 aa, 85 kDa	

Applications

Tested Applications: IHC, ELISA	Positive Controls: IHC : Human tonsillitis tissue,
Species Specificity: human	
Note-IHC: suggested antigen retrieval with TE buffer pH 9.0; (*) Alternatively, antigen retrieval may be performed with citrate buffer pH 6.0	

Background Information

MLH1, also named as COCA2, belongs to the DNA mismatch repair mutL/hexB family. It heterodimerizes with PMS2 to form MutL alpha which is a component of the post-replicative DNA mismatch repair system (MMR). MutL alpha (MLH1-PMS2) interacts physically with the clamp loader subunits of DNA polymerase III, suggesting that it may play a role to recruit the DNA polymerase III to the site of the MMR. MLH1 also implicated in DNA damage signaling, a process which induces cell cycle arrest and can lead to apoptosis in case of major DNA damages. MLH1 heterodimerizes with MLH3 to form MutL gamma which plays a role in meiosis. (PMID: 16873062, PMID: 18206974) Defects in MLH1 are the cause of hereditary non-polyposis colorectal cancer type 2 (HNPCC2). Defects in MLH1 are a cause of mismatch repair cancer syndrome (MMRCS). Defects in MLH1 are a cause of Muir-Torre syndrome (MTS). Defects in MLH1 are a cause of susceptibility to endometrial cancer.

Storage

Storage:
Store at -20°C. Stable for one year after shipment.
Storage Buffer:
PBS with 0.02% sodium azide and 50% glycerol pH 7.3.
Aliquoting is unnecessary for -20°C storage

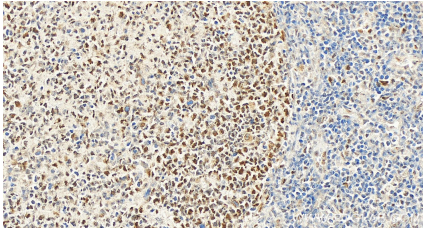
For technical support and original validation data for this product please contact:

T: 4006900926

E: Proteintech-CN@ptglab.comW: ptgcn.com

This product is exclusively available under Proteintech Group brand and is not available to purchase from any other manufacturer.

Selected Validation Data



Immunohistochemical analysis of paraffin-embedded Human tonsillitis tissue slide using 60822-2-Ig (MLH1 antibody) at dilution of 1:2000 (under 40x lens).