

For Research Use Only

# Surfactant Protein A Monoclonal antibody, PBS Only (Capture)

Catalog Number: 60789-1-PBS



## Basic Information

Catalog Number:

60789-1-PBS

Source:

Mouse

Isotype:

IgG2b

Immunogen Catalog Number:

AG23599

GenBank Accession Number:

BC026229

GeneID (NCBI):

653509

UNIPROT ID:

Q8IWL2

Full Name:

surfactant protein A1

Calculated MW:

248 aa, 26 kDa

Purification Method:

Protein A purification

CloneNo.:

1H3C12

## Applications

Tested Applications:

Cytometric bead array, Sandwich ELISA, Indirect ELISA

Species Specificity:

human

## Background Information

### Storage

Storage:

Store at -80°C.

The product is shipped with ice packs. Upon receipt, store it immediately at -80°C

Storage Buffer:

PBS only, pH7.3

For technical support and original validation data for this product please contact:

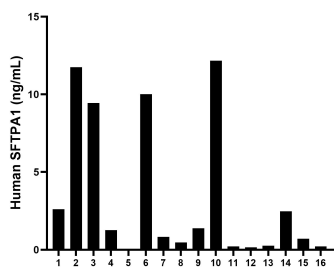
T: 4006900926

E: [Proteintech-CN@ptglab.com](mailto:Proteintech-CN@ptglab.com)

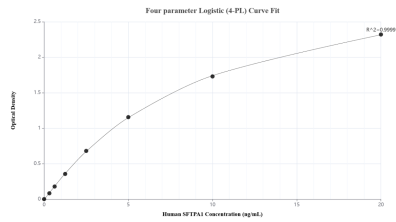
W: [ptgcn.com](http://ptgcn.com)

This product is exclusively available under Proteintech Group brand and is not available to purchase from any other manufacturer.

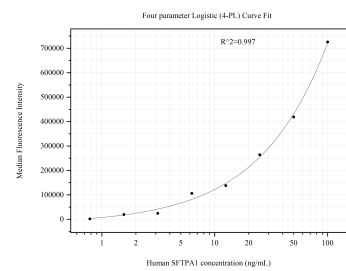
# Selected Validation Data



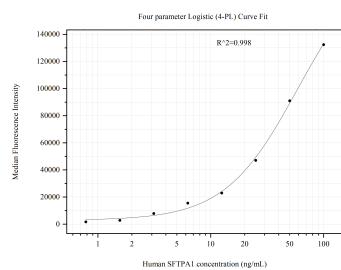
Serum of sixteen individual healthy human donors was measured. The SFTP1 concentration of detected samples was determined to be 3.37 ng/mL with a range of 0.05-12.17 ng/mL.



Sandwich ELISA standard curve of MP51129-1, Human SFTP1 Monoclonal Matched Antibody Pair - PBS only. 60789-1-PBS was coated to a plate as the capture antibody and incubated with serial dilutions of standard Ag23599. 60789-2-PBS was HRP conjugated as the detection antibody. Range: 0.313-20 ng/mL



Cytometric bead array standard curve of MP51129-1, SFTP1 Monoclonal Matched Antibody Pair, PBS Only. Capture antibody: 60789-1-PBS. Detection antibody: 60789-2-PBS. Standard:Ag23599. Range: 0.781-100 ng/mL



Cytometric bead array standard curve of MP51129-2, SFTP1 Monoclonal Matched Antibody Pair, PBS Only. Capture antibody: 60789-1-PBS. Detection antibody: 60789-3-PBS. Standard:Ag23599. Range: 0.781-100 ng/mL