

For Research Use Only

# CD180 Monoclonal antibody, PBS Only (Detector)

Catalog Number: 60768-2-PBS



## Basic Information

Catalog Number: 60768-2-PBS	GenBank Accession Number: BC109069	Purification Method: Protein G purification
Concentration: 1 mg/ml	GeneID (NCBI): 4064	CloneNo.: 1D11C10
Source: Mouse	UNIPROT ID: Q99467	
Isotype: IgG1	Full Name: CD180 molecule	
Immunogen Catalog Number: AG28488	Calculated MW: 661 aa, 74 kDa	

## Applications

**Tested Applications:**  
Cytometric bead array, Sandwich ELISA, Indirect ELISA, Sample test

**Species Specificity:**  
human

## Background Information

### Storage

**Storage:**  
Store at -80°C.  
**The product is shipped with ice packs. Upon receipt, store it immediately at -80°C**

**Storage Buffer:**  
PBS Only

For technical support and original validation data for this product please contact:

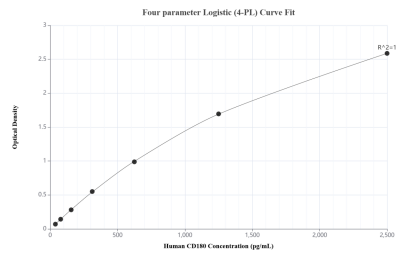
T: 4006900926

E: [Proteintech-CN@ptglab.com](mailto:Proteintech-CN@ptglab.com)

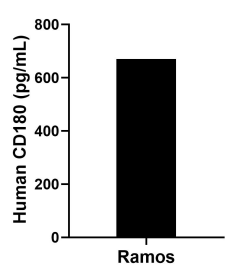
W: [ptgcn.com](http://ptgcn.com)

**This product is exclusively available under Proteintech Group brand and is not available to purchase from any other manufacturer.**

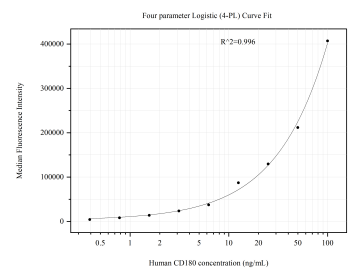
# Selected Validation Data



Sandwich ELISA standard curve of MP51097-1, Human CD180 Monoclonal Matched Antibody Pair - PBS only. 60768-1-PBS was coated to a plate as the capture antibody and incubated with serial dilutions of standardAg28488. 60768-2-PBS was HRP conjugated as the detection antibody. Range: 39.1-2500 pg/mL



The mean CD180 concentration was determined to be 670.7 pg/mL in Ramos cell extract based on a 1.4 mg/mL extract load.



Cytometric bead array standard curve of MP51097-1, CD180 Monoclonal Matched Antibody Pair, PBS Only. Capture antibody: 60768-1-PBS. Detection antibody: 60768-2-PBS. Standard:Ag28488. Range: 0.391-100 ng/mL